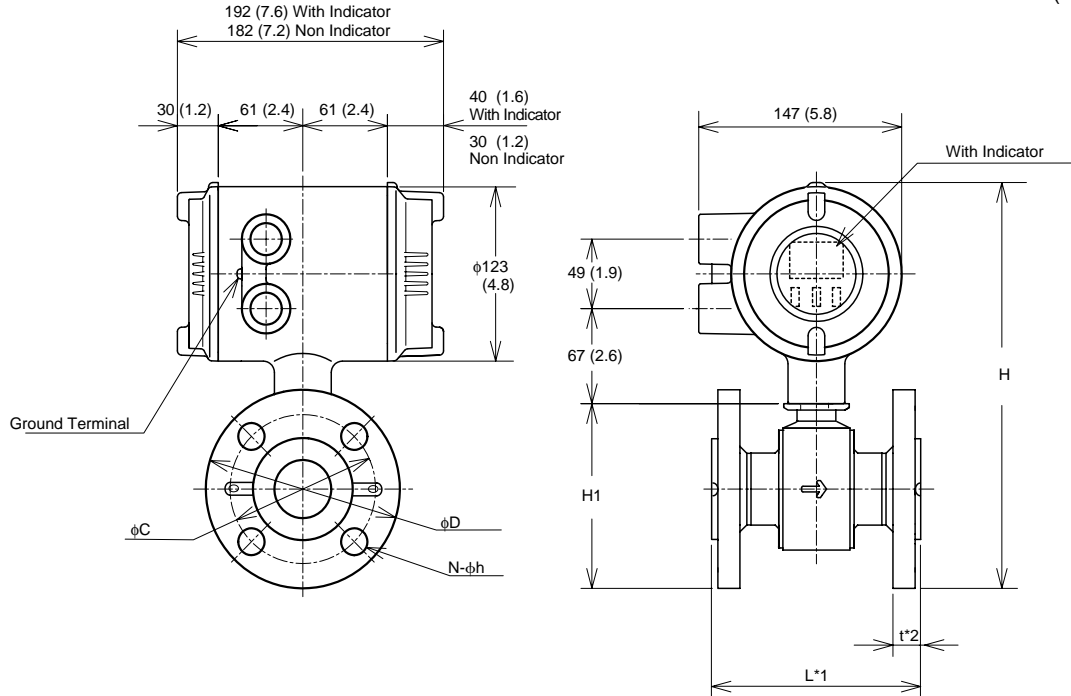


Model SE202MJ,SE202NJ to SE205MJ,SE205NJ Integral Type Magnetic Flowmeter (Flange Type)

Unit :mm
(approx, inch)



Model	SE202MJ,SE202NJ					SE204MJ, SE204NJ					SE205MJ, SE205NJ					
	25 (1)					40 (1.5)					50 (2)					
Nominal size	25 (1)					40 (1.5)					50 (2)					
Flange Type	J1□	J2□	A1□	A2□	D4□	J1□	J2□	A1□	A2□	D4□	J1□	J2□	A1□	A2□	D4□	
Lining	Fluorocarbon PFA															
Face to face length (ISO)	L*1 200 (7.9)					200 (7.9)					200 (7.9)					
Flange outside dia.	ϕD	125 (4.9)	125 (4.9)	108 (4.3)	124 (4.9)	115 (4.5)	140 (5.5)	140 (5.5)	127 (5.0)	155.4 (6.1)	150 (5.9)	155 (6.1)	155 (6.1)	152.4 (6.0)	165.1 (6.5)	165 (6.5)
Height	H	269.5 (10.6)	269.5 (10.6)	261 (10.3)	269 (10.6)	264.5 (10.4)	287 (11.3)	287 (11.3)	280.5 (11.0)	294.7 (11.6)	292 (11.5)	313.5 (12.3)	313.5 (12.3)	312.2 (12.3)	318.6 (12.5)	318.5 (12.5)
	H1	113.5 (4.5)	113.5 (4.5)	105 (4.1)	113 (4.4)	108.5 (4.3)	131 (5.2)	131 (5.2)	124.5 (4.9)	138.7 (5.5)	136 (5.4)	157.5 (6.2)	157.5 (6.2)	156.2 (6.1)	162.6 (6.4)	162.5 (6.4)
Pitch circle dia.	ϕC	90 (3.5)	90 (3.5)	79.2 (3.1)	88.9 (3.5)	85 (3.3)	105 (4.1)	105 (4.1)	98.6 (3.9)	114.3 (4.5)	110 (4.3)	120 (4.7)	120 (4.7)	125 (4.8)	127 (5.0)	125 (4.9)
Number of holes	N	4					4					4				
Dia. of holes	ϕh	19 (0.7)	19 (0.7)	15.7 (0.6)	19.1 (0.7)	14 (0.6)	19 (0.7)	19 (0.7)	15.7 (0.6)	22.4 (0.9)	18 (0.7)	19 (0.7)	19 (0.7)	19.1 (0.7)	19.1 (0.7)	18 (0.7)
Thickness	t	17.8 (0.7)	19.8 (0.8)	18 (0.7)	21.3 (0.8)	21.8 (0.9)	19.8 (0.8)	21.8 (0.9)	21.3 (0.8)	24.4 (1.0)	21.8 (0.9)	19.8 (0.8)	21.8 (0.9)	22.9 (0.9)	26.2 (1.0)	23.8 (0.9)
Weight kg (lb)*2		6.0 (13.0)	6.3 (13.9)	5.3 (11.7)	6.5 (14.3)	6.3 (13.9)	7.6 (16.8)	7.9 (17.4)	7.2 (15.9)	9.5 (20.9)	9.2 (20.3)	9.0 (19.8)	9.1 (20.0)	9.5 (20.9)	11.1 (24.5)	10.9 (24.0)

*1 : When no earth ring is selected the face to face length is shorter by approx. 1.6mm (0.06 inch).

The face to face length is longer by approx. 26mm (1.02 inch) for earth ring(P,T).

The face to face length is longer approx. 8.4mm(0.33inch) for optional code /FRG.

*2 : The thickness (t) is longer approx. 13.2mm(0.52inch) for earth ring(P,T).

The thickness (t) is longer approx. 4.2mm(0.17inch) for optional code /FRG.

*3 : With Indicator Option : Add 0.22 kg (0.49 lb)

*4 : The flow direction is opposite (right to left when facing onto indicator) in case of optional code /CRC.

SD10B1-05E.eps

Terminal symbols	Description
PLS/ALM + -	PULSE/ALARM OUTPUT
CUR + -	
POWER + -	POWER SUPPLY
G	
	EARTH

