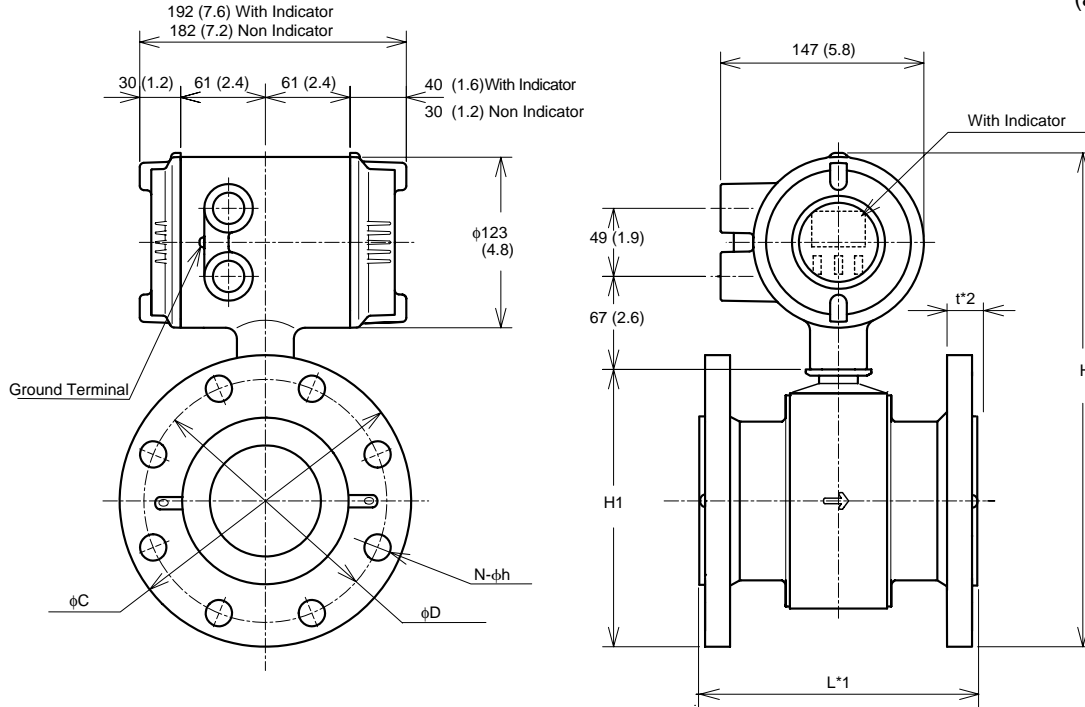


## Model SE208MJ, SE208NJ and SE210MJ, SE210NJ Integral Type Magnetic Flowmeter (FlangeType)

Unit :mm  
(approx, inch)



Model	SE208MJ, SE208NJ						SE210MJ, SE210NJ						
	80 (3)						100 (4)						
Nominal size													
Flange Type	J1 □	J2 □	A1 □	A2 □	D2 □	G1 □	J1 □	J2 □	A1 □	A2 □	D2 □	G1 □	
Lining	Fluorocarbon PFA						Fluorocarbon PFA						
Face to face length (ISO)	L*1						250 (9.8)						
Flange outside dia.	$\phi D$	185 (7.3)	200 (7.9)	190.5 (7.5)	209.6 (8.3)	200 (7.9)	211 (8.3)	210 (8.3)	225 (8.9)	228.6 (9.0)	254 (10.0)	220 (8.7)	238 (9.4)
Height	H	340.5 (13.4)	348 (13.7)	343.3 (13.5)	352.8 (13.9)	348 (13.7)	353.5 (13.9)	366 (14.4)	373.5 (14.7)	375.3 (14.8)	388 (15.3)	371 (14.6)	380 (15.0)
	H1	184.5 (7.3)	192 (7.6)	187.3 (7.4)	196.8 (7.7)	192 (7.7)	197.5 (7.8)	210 (8.3)	217.5 (8.6)	219.3 (8.6)	232 (9.1)	215 (8.5)	224 (8.8)
Pitch circle dia.	$\phi C$	150 (5.9)	160 (6.3)	152.4 (6.0)	168.1 (6.6)	160 (6.3)	168 (6.6)	175 (6.9)	185 (7.3)	190.5 (7.5)	200.2 (7.9)	180 (7.1)	195 (7.7)
Number of holes	N	8	8	4	8	8	4	8	8	8	8	8	4
Dia. of holes	$\phi h$	19 (0.7)	23 (0.9)	19.1 (0.7)	22.4 (0.9)	18 (0.7)	19 (0.7)	19 (0.7)	23 (0.9)	19.1 (0.7)	22.4 (0.9)	18 (0.7)	19 (0.7)
Thickness	t	21.8 (0.9)	25.8 (1.0)	27.7 (1.1)	32.2 (1.3)	23.8 (0.9)	21.8 (0.9)	21.8 (0.9)	27.8 (1.1)	27.7 (1.1)	35.6 (1.4)	23.8 (0.9)	21.8 (0.9)
Weight kg (lb)		11.7 (25.8)	15.6 (34.3)	16.3 (35.9)	17.6 (38.8)	13.6 (29.9)	14.0 (30.9)	13.7 (30.2)	17.6 (38.7)	18.3 (40.3)	24.8 (54.7)	15.6 (34.3)	26 (57.3)

\*1 : When no earth ring is selected the face to face length is shorter by approx. 1.6mm(0.06 inch).  
The face to face length is longer by approx. 26mm (1.02 inch) for earth ring(P,T).

\*2 : The thickness (t) is longer by approx. 13.2mm(0.52 inch) for earth ring(P,T).  
The thickness (t) is longer by approx. 4.2mm(0.17inch) for optional code /FRG.

\*3 : With Indicator Option : Add 0.22 kg (0.49 lb)

\*4 : The flow direction is opposite (right to left when facing onto indicator) in case of optional code /CRC.

SD10B1-06E.eps

Terminal symbols	Description
PLS/ALM + -	PULSE/ALARM OUTPUT
CUR + -	
POWER + -	POWER SUPPLY
G	
	EARTH

