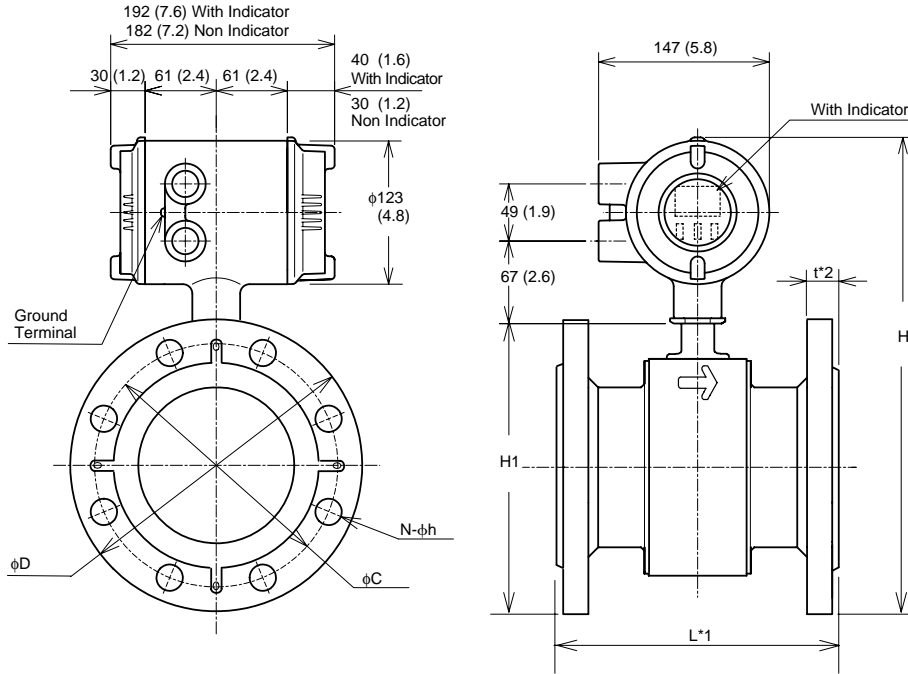


Model SE215MJ,SE215NJ and SE220MJ,SE220NJ Integral Type Magnetic Flowmeter (Flange Type)

Unit :mm
(approx, inch)



Model	SE215MJ, SE215NJ						SE220MJ, SE220NJ							
Nominal size	150 (6)						200 (8)							
Flange Type	J1 □	J2 □	A1 □	A2 □	D2 □	G1 □	J1 □	J2 □	A1 □	A2 □	D1 □	D2 □	G1 □	
Lining	Fluorocarbon PFA						Fluorocarbon PFA							
Face to face length (ISO)	L*1	300 (11.8)						350 (13.8)						
Flange outside dia.	φD	280 (11.0)	305 (12.0)	279.4 (11.0)	317.5 (12.5)	285 (11.2)	290 (11.4)	330 (13.0)	350 (13.8)	342.9 (13.5)	381 (15.0)	340 (13.4)	340 (13.4)	342 (13.5)
Height	H	435 (17.1)	447.5 (17.6)	434.7 (17.1)	453.8 (17.9)	437.5 (17.2)	440 (17.3)	485 (19.1)	495 (19.5)	491.5 (19.4)	510.5 (20.1)	490 (19.3)	490 (19.3)	491 (19.3)
	H1	184.5 (7.3)	192 (7.6)	187.3 (7.4)	196.8 (7.7)	192 (7.6)	197.5 (7.8)	329 (13.0)	217.5 (8.6)	219.3 (8.6)	354.5 (14.0)	334 (13.1)	334 (13.1)	335 (13.2)
Pitch circle dia.	φC	240 (9.4)	260 (10.2)	241.3 (9.5)	269.7 (10.6)	240 (9.4)	247 (9.7)	290 (11.4)	305 (12.0)	298.4 (11.7)	330.2 (13.0)	295 (11.6)	295 (11.6)	299 (11.8)
Number of holes	N	8	12	8	12	8	6	12	12	8	12	8	12	12
Dia. of holes	φh	23 (0.9)	25 (1.0)	22.3 (0.9)	22.3 (0.9)	22 (0.9)	19 (0.7)	23 (0.9)	25 (1.0)	22.3 (0.9)	25.4 (1.0)	22 (0.9)	22 (0.9)	19 (0.7)
Thickness	t	27 (1.0)	33 (1.3)	30.4 (1.2)	41.5 (1.6)	27 (1.1)	27 (1.1)	27 (1.1)	35 (1.4)	49.4 (1.9)	33.4 (1.3)	29 (1.1)	29 (1.1)	29 (1.1)
Weight kg (lb)		28 (61.7)	35 (77.2)	30 (66.1)	45 (99.2)	30 (66.1)	29 (64.0)	39 (86)	49 (108)	46 (101)	68 (149.9)	43 (94.8)	44 (97.0)	45 (99.3)

*1 : When no earth ring is selected the face to face length is shorter by approx. 2mm (0.08 inch).

The face to face length is longer by approx. 34mm (1.34 inch) for earth ring(P,T).

The face to face length is longer by approx. 10.0mm (0.40 inch) for optional code /FRG.

*2 : The thickness (t) is longer by approx. 16mm(0.63inch) for earth ring(P,T).

The thickness (t) is longer by approx. 5.0mm(0.20inch) for optional code /FRG.

*3 : With Indicator Option : Add 0.22 kg (0.49 lb)

*4 : The flow direction is opposite (right to left when facing onto indicator) in case of optional code /CRC.

SD10B1-07E.eps

Terminal symbols	Description
PLS/ALM + -	PULSE/ALARM OUTPUT
CUR + -	CURRENT OUTPUT 4 to 20mA DC
POWER + -	POWER SUPPLY
G	EARTH

