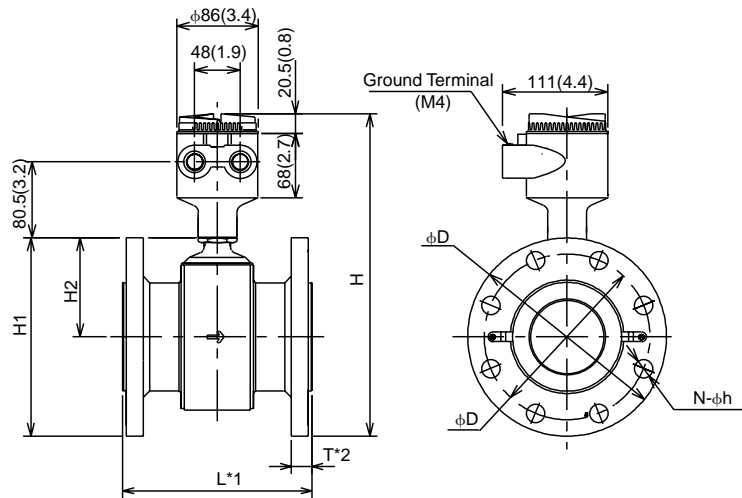


Model SE208DJ, SE208EJ and SE210DJ, SE210EJ Remote Type Magnetic Flowmeter (Flange Type)

Unit :mm
(approx, inch)



Unit : mm (Approx. inch)

Model	SE208DJ , SE208EJ						SE210DJ , SE210EJ						
Nominal Size	80 (3)						100 (4)						
Flange Type	J1 □	J2 □	A1 □	A2 □	D2 □	G1 □	J1 □	J2 □	A1 □	A2 □	D2 □	G1 □	
Lining	Fluorocarbon PFA						Fluorocarbon PFA						
Height	H	315.5 (12.4)	323 (12.7)	318.3 (12.5)	327.8 (12.9)	323 (12.7)	328.5 (12.9)	341 (13.4)	348.5 (13.7)	350.3 (13.8)	363 (14.3)	346 (13.6)	355 (14.0)
	H1	184.5 (7.3)	192 (7.6)	187.3 (7.4)	196.8 (7.7)	192 (7.6)	197.5 (7.8)	210 (8.3)	217.5 (8.6)	219.3 (8.6)	232 (9.1)	215 (8.5)	224 (8.8)
	H2	92 (3.6)						105 (4.1)					
Face to face length	L*1	200 (7.9)						250 (9.8)					
Flange outside dia.	phi D	185 (7.3)	200 (7.9)	190.5 (7.5)	209.6 (8.3)	200 (7.9)	211 (8.3)	210 (8.3)	225 (8.6)	228.6 (9.0)	254 (10.0)	220 (8.7)	238 (9.4)
Pitch circle dia.	phi C	150 (5.9)	160 (6.3)	152.4 (6.0)	168.1 (6.6)	160 (6.3)	168 (6.6)	175 (6.9)	185 (7.3)	190.5 (7.5)	200.2 (7.9)	180 (7.1)	195 (7.7)
Thickness (Except P,T Earth ring)	T*2	21.8 (0.9)	25.8 (1.0)	27.7 (1.1)	32.2 (1.3)	23.8 (0.9)	21.8 (0.9)	21.8 (0.9)	27.8 (1.1)	27.7 (1.1)	35.6 (1.4)	23.8 (0.9)	21.8 (0.9)
Thickness (P , T Earth ring)	T*2	35 (1.4)	39 (1.5)	40.9 (1.6)	45.4 (1.8)	37 (1.5)	35 (1.4)	35 (1.4)	41 (1.6)	40.9 (1.6)	48.8 (1.9)	37 (1.5)	35 (1.4)
Dia. of holes	phi h	19 (0.7)	23 (0.9)	19.1 (0.8)	22.4 (0.9)	18 (0.7)	19 (0.7)	19 (0.7)	23 (0.9)	19.1 (0.8)	22.4 (0.9)	18 (0.7)	19 (0.7)
Number of holes	N	8	8	4	8	8	4	8	8	8	8	4	4
Weight kg (lb)		10.2 (22.5)	14.1 (31.1)	14.8 (32.7)	16.1 (35.5)	12.1 (26.7)	12.5 (27.6)	11.8 (25.9)	15.7 (34.5)	16.4 (36.0)	22.9 (50.4)	13.7 (30.1)	24.1 (53.0)

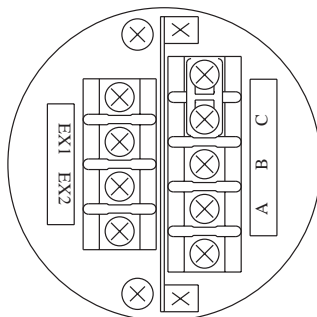
*1 When no earth ring is selected the face to face length is shorter by approx. 1.6mm (0.06 in).

The face to face length is longer by approx. 26mm (1.02 in) for earth ring (P,T).

The face to face length is longer by approx. 8.4mm (0.33 in) for optional code /FRG.

*2 The thickness (T) is longer by approx. 4.2mm(0.17 in) for optional code /FRG.

SD6d.eps



Terminal symbols	Description
A] Flow signal output
B	
C	
Ex1] Excitation current input
Ex2	

SD8d.eps