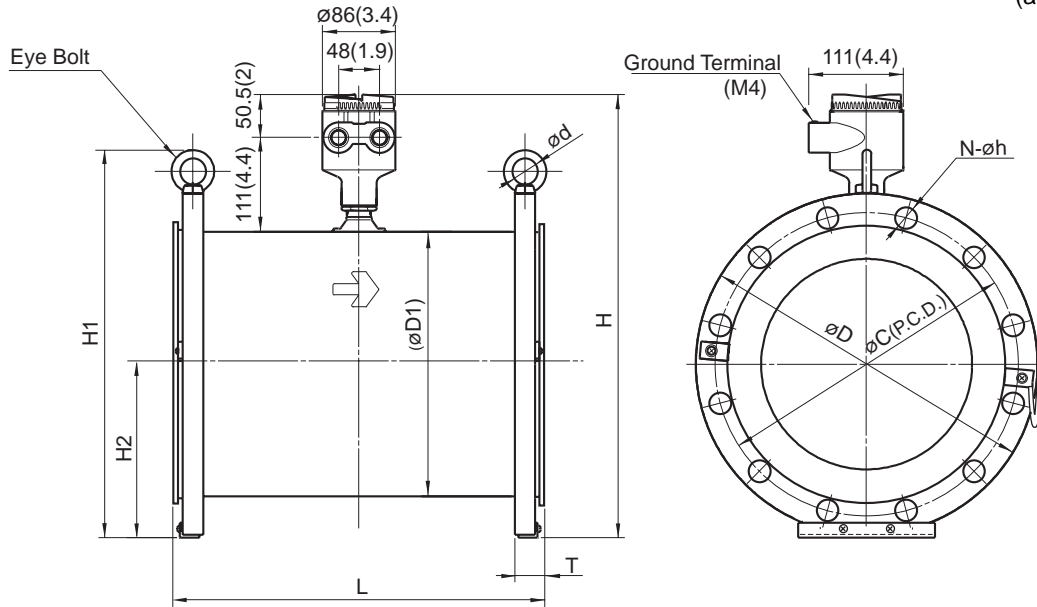


Unit : mm
(approx, inch)



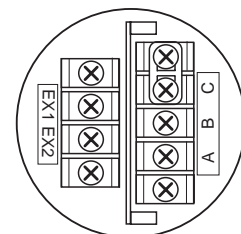
Unit : mm
(approx : inch)

Model	SE325								SE330								
	251(10)								300(12)								
Nominal Size																	
Flange Type	A1C	A2C	D1C	D2C	G1C	J1C	J2C	A1C	A2C	D1C	D2C	G1C	J1C	J2C			
Lining	Fluorocarbon PFA								Fluorocarbon PFA								
Height	H	522.4 (20.6)	541.5 (21.3)	516.7 (20.3)	521.7 (20.5)	524.2 (20.6)	519.2 (20.4)	534.2 (21)	584.7 (23)	603.6 (23.7)	565.7 (22.3)	573.2 (22.5)	575.2 (22.6)	565.7 (22.3)	583.2 (22.9)		
Height	H1	460.6 (18.1)	498.7 (19.6)	449.2 (17.7)	459.2 (18.1)	464.2 (18.3)	454.2 (17.8)	484.2 (19.1)	537.1 (21)	574.9 (22.6)	499.2 (19.6)	514.2 (20.2)	518.2 (20.4)	499.2 (19.6)	534.2 (21)		
Height	H2	206.4 (8.1)	225.45 (8.9)	200.7 (7.9)	205.7 (8.1)	208.2 (8.2)	203.2 (8.0)	218.2 (8.6)	244.7 (9.6)	263.6 (10.3)	225.7 (8.9)	233.2 (9.2)	235.2 (9.3)	225.7 (8.9)	243.2 (9.6)		
Eye bolt	ød	M12 / 30								M12 / 30							
Face to face length (ISO)*1	L	450(17.7)								500(20)							
Outside diameter	D	406.4 (16)	444.5 (17.5)	395 (15.5)	405 (16)	410 (16.1)	400 (15.7)	430 (16.9)	482.9 (19)	520.7 (20)	445 (17.5)	460 (18)	464 (18.2)	445 (17.5)	480 (18.9)		
Thickness	T	48.5 (1.9)	66 (2.6)	44 (1.7)	44 (1.7)	42 (1.7)	42 (1.7)	52 (2)	40 (1.6)	59 (2.3)	34 (1.3)	36 (1.4)	34 (1.3)	44 (1.7)			
Pitch circle dia.	C	361.9 (14.2)	387.3 (15.2)	350 (13.8)	355 (14)	360 (14.2)	355 (14)	380 (15)	431.8 (17)	450.8 (18)	400 (16)	410 (16.3)	414 (16.3)	400 (15.7)	430 (16.9)		
Dia. of holes	øh	25.4 (1)	28.4 (1.1)	22 (0.9)	26 (1)	23 (0.9)	25 (1)	27 (1.1)	25.4 (1)	31.7 (1.2)	22 (0.9)	26 (1)	23 (0.9)	25 (1)	27 (1.1)		
Number of holes	N	12	16	12	12	8	12	12	12	16	12	12	10	16	16		
Weight	kg	76	81	70	71	70	70	73	96	104	87	88	87	87	91		
	(lb)	(167.6)	(178.6)	(154.4)	(156.6)	(154.4)	(154.4)	(161)	(211.7)	(229.3)	(191.8)	(194)	(191.8)	(191.8)	(200.7)		

Model	SE335				SE340				
	350(14)				400(16)				
Flange Type	A1C	D1C	G1C	J1C	A1C	D1C	G1C	J1C	
Lining	Fluorocarbon PFA				Fluorocarbon PFA				
Height	H	630.9 (24.8)	616.7 (24.3)	629.2 (24.8)	609.2 (24)	690.2 (27.2)	674.2 (26.5)	682.7 (26.8)	671.7 (26.4)
Height	H1	596.6 (23.5)	568.2 (22.4)	593.2 (23.4)	553.2 (21.8)	660.1 (26)	628.2 (24.7)	645.2 (25.4)	623.2 (24.5)
Height	H2	269.9 (10.6)	255.7 (10.1)	268.2 (10.6)	248.2 (9.8)	301.65 (11.9)	285.7 (11.2)	294.2 (11.6)	283.2 (11.1)
Eye bolt	ød	M16 / 35				M16 / 35			
Face to face length (ISO)*1	L	550(21.7)				600(23.6)			
Outside diameter	D	533.4 (21)	505 (19.9)	530 (20.8)	490 (19.2)	596.9 (23.5)	565 (22.2)	582 (22.9)	560 (22)
Thickness	T	45 (1.8)	36 (1.4)	36 (1.4)	36 (1.4)	47 (1.8)	36 (1.4)	36 (1.4)	38 (1.5)
Pitch circle dia.	C	476.2 (18.7)	460 (18.1)	472 (18.6)	445 (17.5)	539.7 (21.2)	515 (20.3)	524 (20.6)	510 (20.1)
Dia. of holes	øh	28.4 (1.2)	22 (0.9)	25 (1)	25 (1)	28.4 (1.1)	26 (1)	25 (1)	27 (1.1)
Number of holes	N	12	16	10	12	16	16	12	16
Weight	kg	123	107	107	107	158	135	135	135
	(lb)	(271.2)	(235.9)	(235.9)	(235.9)	(348.4)	(297.7)	(297.7)	(297.7)

*1 When no earth ring is selected the face to face length is shorter by approx.
26mm (1.02 inch) for 250mm(10 inch), 6mm (0.23 inch) for 300mm (12 inch),
10mm (0.4 inch) for 350mm (14 inch) and 400mm (16 inch).

Terminal Positions



Terminal Connection

Terminal symbols	Description
A B C	Flow signal output
Ex1 Ex2	Excitation current input

SD8d.eps