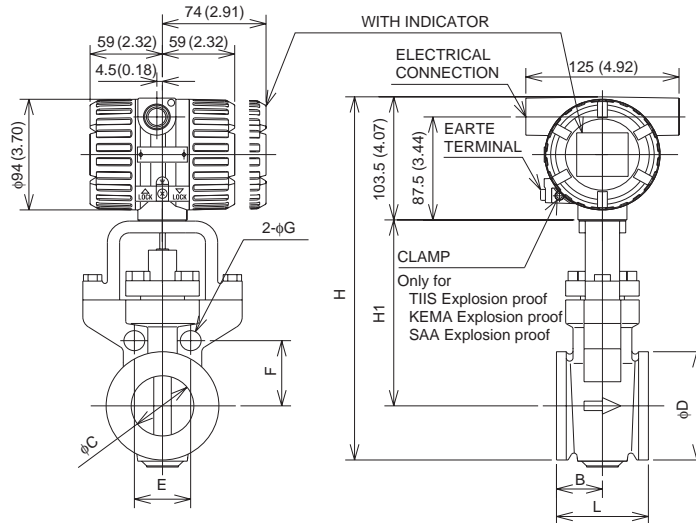


Drawings

Models DY015, DY025, DY040, digitalYEWFL0
 DY050, DY080 and DY100
 (digitalYEWFL0)
 Digital Vortex Flowmeter
 (Integral / Remote and Wafer type)



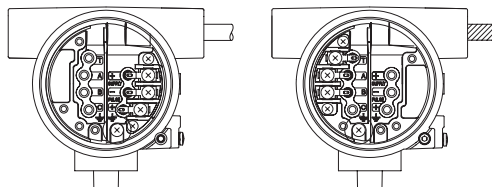
Unit: mm
(approx. inch)

TYPE	INTEGRAL/REMOTE													
	DY015 (15mm, 1/2in)						DY025 (25mm, 1in)							
PROCESS CONNECTION	AJ1	AJ2	AJ4	AA1	AA2	AA4	AD1 - AD4	AJ1	AJ2	AJ4	AA1	AA2	AA4	AD1 - AD4
L	70 (2.76)						70 (2.76)							
B	35 (1.38)						35 (1.38)							
C	14.6 (0.57)						25.7 (1.01)							
D	35.1 (1.38)						50.8 (2.00)							
H	248 (9.76)						258 (10.16)							
H1	127 (5.00)						129 (5.08)							
E	49.5 (1.95)	49.5 (1.95)	56.6 (2.23)	42.7 (1.68)	47.1 (1.85)	46 (1.81)	63.6 (2.50)	63.6 (2.50)	67.2 (2.65)	56 (2.21)	62.9 (2.48)	62.9 (2.48)	60.1 (2.37)	
F	24.7 (0.97)	24.7 (0.97)	28.3 (1.11)	21.4 (0.84)	23.5 (0.93)	23 (0.91)	31.8 (1.25)	31.8 (1.25)	33.6 (1.32)	28 (1.10)	31.4 (1.24)	31.4 (1.24)	30.1 (1.19)	
G	18 (0.51)	18 (0.51)	17 (0.67)	14 (0.55)	14 (0.55)	14 (0.55)	17 (0.67)	17 (0.67)	17 (0.67)	14 (0.55)	17 (0.67)	17 (0.67)	15 (0.51)	
WEIGHT kg	2.8 (6.17lb)						3.7 (8.16lb)							

TYPE	INTEGRAL/REMOTE													
	DY040 (40mm, 1 1/2in)						DY050 (50mm, 2in)							
PROCESS CONNECTION	AJ1	AJ2	AJ4	AA1	AA2	AA4	AD1 - AD4	AJ1	AJ2	AJ4	AA1	AA2	AA4	AD1 - AD4
L	70 (2.76)						75 (2.95)							
B	35 (1.38)						37.5 (1.48)							
C	39.7 (1.56)						51.1 (2.01)							
D	73 (2.87)						92 (3.62)							
H	276 (10.87)						307.5 (12.11)							
H1	136 (5.35)						158 (6.22)							
E	74.2 (2.92)	74.2 (2.92)	84.9 (3.34)	69.7 (2.74)	80.8 (3.18)	80.8 (3.18)	77.8 (3.06)	(Note 3)	45.9 (1.81)	49.8 (1.96)	(Note 3)	48.6 (1.91)	48.6 (1.91)	(Note 3)
F	37.1 (1.46)	37.1 (1.46)	42.4 (1.67)	31.1 (1.22)	40.4 (1.59)	40.4 (1.59)	38.9 (1.53)	(Note 3)	55.4 (2.18)	50.1 (1.97)	(Note 3)	53.7 (2.11)	53.7 (2.11)	(Note 3)
G	17 (0.67)	17 (0.67)	21 (0.83)	14 (0.55)	20 (0.79)	20 (0.79)	17 (0.67)	(Note 3)	17 (0.67)	17 (0.67)	(Note 3)	17 (0.67)	17 (0.67)	(Note 3)
WEIGHT kg	4.3 (9.48lb)						6.0 (13.23lb)							

TYPE	INTEGRAL/REMOTE															
	DY080 (80mm, 3in)						DY100 (100mm, 4in)									
PROCESS CONNECTION	AJ1	AJ2	AJ4	AA1	AA2	AA4	AD1 - AD2	AD3 - AD4	AJ1	AJ2	AJ4	AA1	AA2	AA4	AD1 - AD2	AD3 - AD4
L	100 (3.94)						120 (4.72)									
B	40 (1.57)						50 (1.97)									
C	71 (2.80)						93.8 (3.69)									
D	127 (5.00)						157.2 (6.19)									
H	342 (13.47)						372 (14.65)									
H1	175 (6.89)						190 (7.48)									
E	57.4 (2.26)	61.2 (2.41)	65.1 (2.56)	(Note 3)	64.4 (2.54)	64.4 (2.54)	61.2 (2.41)	61.2 (2.41)	67 (2.64)	70.8 (2.79)	78.5 (3.09)	72.9 (2.87)	76.6 (3.02)	82.6 (3.25)	68.9 (2.71)	72.7 (2.86)
F	69.3 (2.73)	73.9 (2.91)	78.5 (3.09)	(Note 3)	77.7 (3.06)	77.7 (3.06)	73.9 (2.91)	73.9 (2.91)	80.8 (3.18)	85.5 (3.37)	94.7 (3.73)	88 (3.46)	92.5 (3.64)	99.7 (3.92)	83.1 (3.27)	87.8 (3.46)
G	17 (0.67)	21 (0.83)	21 (0.83)	(Note 3)	20 (0.79)	20 (0.79)	17 (0.67)	17 (0.67)	17 (0.67)	21 (0.83)	23 (0.91)	17 (0.67)	17 (0.67)	23 (0.91)	17 (0.67)	21 (0.83)
WEIGHT kg	9.4 (20.73lb)						12.8 (28.22lb)									

(Note 1) Integral weight is the same as Remote.
 (Note 2) In case of with Indicator, add 0.2kg.
 (Note 3) The hole is not provided.
 (Note 4) The flow direction is opposite (right to left when facing onto indicator) in case of code / CRC.



Integral type

Remote type

Terminal Wiring

Integral Type (BRAIN or HART protocol)	SUPPLY +	Power Supply and 4 to 20mA DC Output Terminal
	PULSE -	
Integral Type (Foundation Fieldbus)	SUPPLY +	Fieldbus Communication Terminal
	SUPPLY -	
Remote Type Detector	T	Built-in Temperature Sensor Terminal
	A	Signal Output Terminal
	B	
	C	Common Terminal
	⊥	Ground Terminal

* Use DYC signal cable for remote type
 * T is used for /MV only.