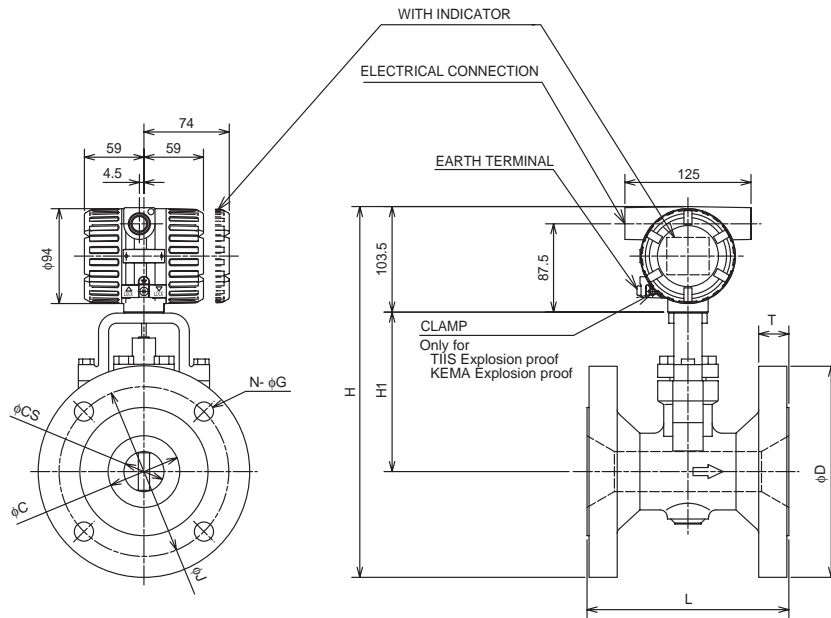


Drawings

Models DY040, DY050, DY080,
DY100, DY150, DY200
(digitalYEWFLO)
Reduced Bore Type(/R2)
Digital Vortex Flowmeter(Flange type)

digitalYEWFLO

Unit: mm



Model Code	DY040 /R2			
Process Connection	BJ1	BJ2	BA1 BS1 BP1	BA2 BS2 BP2
L	150			
C	39.7			
CS	14.6			
D	140	140	127	155.4
H	300.5	300.5	294.0	308.2
H1	127			
T	16	18	17.5	20.6
J	105	105	98.6	114.3
N	4			
G	19	19	15.7	22.4
Weight kg	7.7	7.9	7.6	8.8

Model Code	DY050 /R2			
Process Connection	BJ1	BJ2	BA1 BS1 BP1	BA2 BS2 BP2
L	170			
C	51.1			
CS	25.7			
D	155	155	152.4	165.1
H	310	310	308.7	315.1
H1	129			
T	16	18	19.1	22.4
J	120	120	120.7	127
N	4	8	4	8
G	19			
Weight kg	10	10.5	10.6	12.1

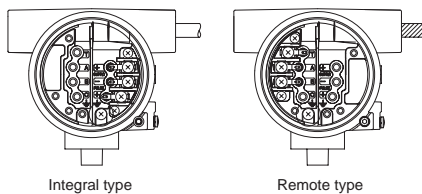
Model Code	DY080 /R2			
Process Connection	BJ1	BJ2	BA1 BS1 BP1	BA2 BS2 BP2
L	200			
C	71			
CS	39.7			
D	185	200	190.5	209.6
H	332	339.5	334.8	344.3
H1	136			
T	18	22	23.9	28.4
J	150	160	152.4	168.2
N	8	8	4	8
G	19	23	19	22.4
Weight kg	13.6	16.2	16.2	20

Model Code	DY100 /R2			
Process Connection	BJ1	BJ2	BA1 BS1 BP1	BA2 BS2 BP2
L	220			
C	93.8			
CS	51.1			
D	210	225	228.6	254
H	366.5	374	375.8	388.5
H1	158			
T	18	24	23.9	31.8
J	175	185	190.5	200.2
N	8			
G	19	23	19	22.4
Weight kg	20.9	24.9	25.5	34

Model Code	DY150 /R2			
Process Connection	BJ1	BJ2	BA1 BS1 BP1	BA2 BS2 BP2
L	270			
C	138.8			
CS	71			
D	280	305	279.4	317.5
H	418.5	431	418.2	437.3
H1	175			
T	22	28	25.4	36.6
J	240	260	241.3	269.7
N	8	12	8	12
G	23	25	22.4	22.4
Weight kg	40.3	50.3	43.3	61.3

Model Code	DY200 /R2			
Process Connection	BJ1	BJ2	BA1 BS1 BP1	BA2 BS2 BP2
L	310			
C	185.6			
CS	93.8			
D	330	350	342.9	381
H	458.5	468.5	465.0	484
H1	190			
T	22	30	28.4	41.1
J	290	305	298.5	330.2
N	12	12	8	12
G	23	25	22.4	25.4
Weight kg	61.9	68.9	71.9	96.9

- (Note.1) Integral weight is the same as Remote.
 (Note.2) In case of with indicator, add 0.2kg.
 (Note.3) The hole is not provided.
 (Note.4) The flow direction is opposite (right to left when facing onto indicator) in case of code /CRC.



Terminal Wiring

Integral Type (BRAN or HART protocol)	SUPPLY +	Power Supply and 4 to 20mA DC Output Terminal
	PULSE +	
Integral Type (Foundation Fieldbus)	SUPPLY +	Fieldbus Communication Terminal
	SUPPLY -	
Remote Type Detector	T	Built-in Temperature Sensor Terminal
	A	Signal Output Terminal
	B	
	C	Common Terminal
	⏏	Ground Terminal

* Use DYC signal cable for remote type
 * T is used for /MV only.