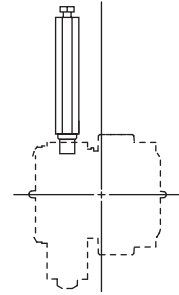
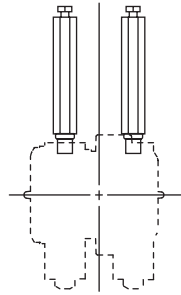
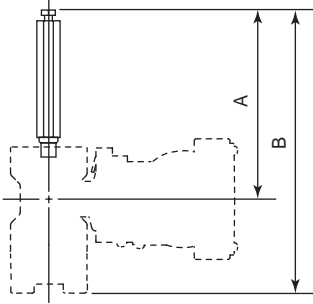


Unit: mm(approx. inch)

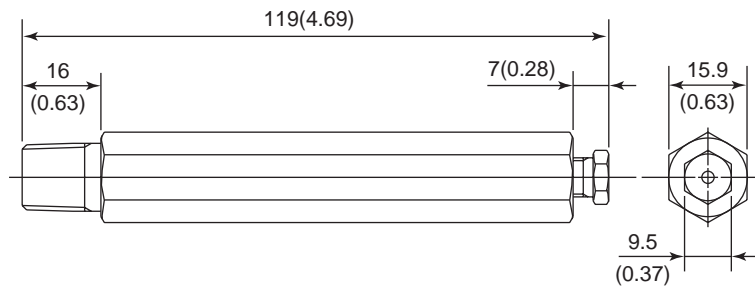
● EJX110A, EJX120A, EJX130A,  
EJX115A, EJX910A, and EJX930A

● EJX310A, EJX430A, and  
EJX440A



Model	Dimensions A		Dimensions B	
	Option code /U1	Option code /U1/K1, /K2, /K5, or /K6	Option code /U1	Option code /U1/K1, /K2, /K5, or /K6
EJX110A, EJX310A, EJX430A, and EJX910A (Wetted Parts Material Code: S)	149(5.87)	160(6.3)	223(8.78)	234(9.21)
EJX115A	149(5.87)	160(6.3)	231(9.09)	242(9.53)
EJX440A	171(6.73)	182(7.17)	267(10.51)	278(10.94)
EJX110A and EJX430A (Wetted Parts Material Code: H, M, T, A, B, D)	154(6.06)	165(6.5)	233(9.17)	244(9.61)
EJX120A				
EJX130A and EJX930A	176(6.93)	187(7.36)	277(10.91)	288(11.34)

● Long vent plug



● Long vent plug for oil-prohibited use (when combined with Option code K1, K2, K5, or K6)

