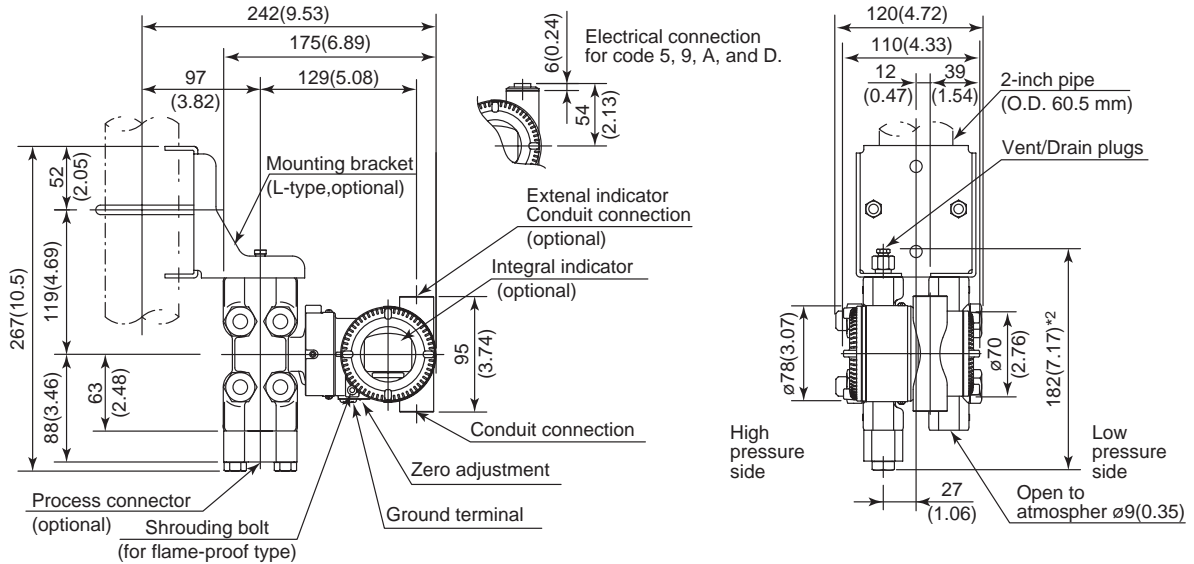
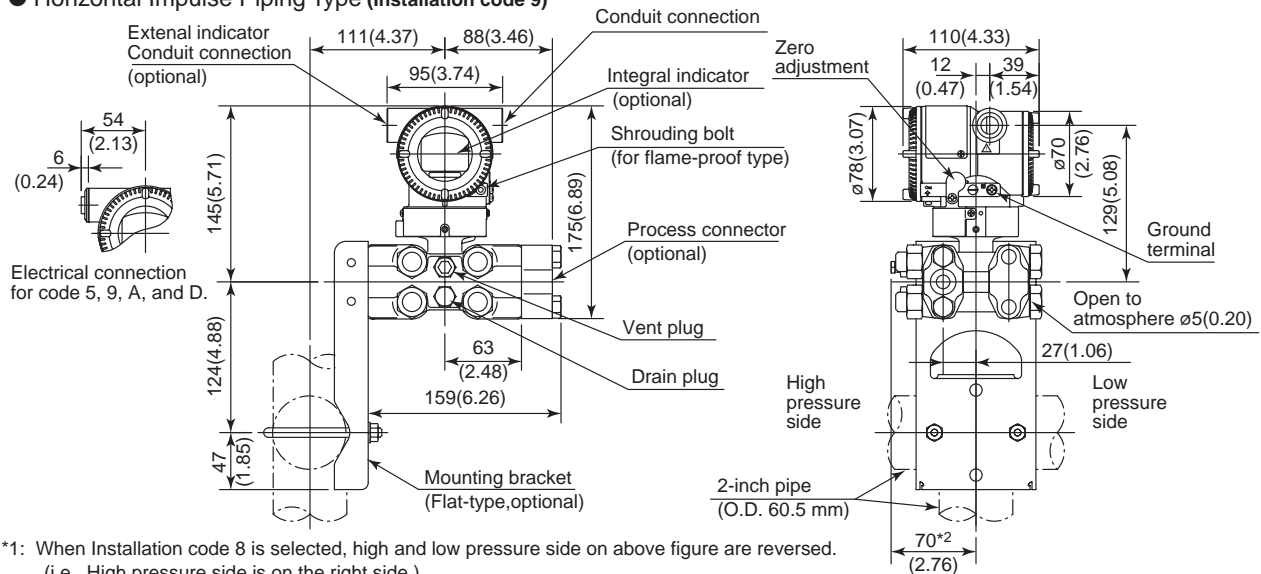


Unit: mm(approx. inch)

● Vertical Impulse Piping Type (Installation code 7)



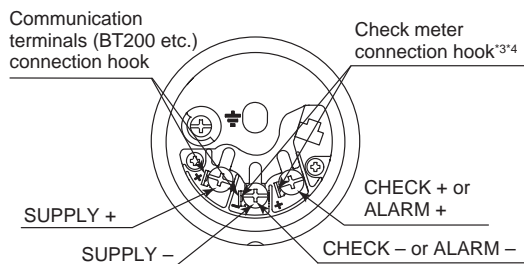
● Horizontal Impulse Piping Type (Installation code 9)



*1: When Installation code 8 is selected, high and low pressure side on above figure are reversed. (i.e. High pressure side is on the right side.)

*2: When Option code K1, K2, K5, or K6 is selected, add 15 mm(0.59 inch) to the value in the figure.

● Terminal Configuration



● Terminal Wiring

| | | |
|----------------------|--------|--|
| SUPPLY | + - | Power supply and output terminal |
| CHECK or ALARM | + - | External indicator (ammeter) terminal ^{3/4} or Status contact output terminal ⁴ (when /AL is specified) |
| | ⏏ | Ground terminal |

*3: When using an external indicator or check meter, the internal resistance must be 10 Ω or less. A check meter or indicator cannot be connected when /AL option is specified.

*4: Not available for fieldbus communication type.