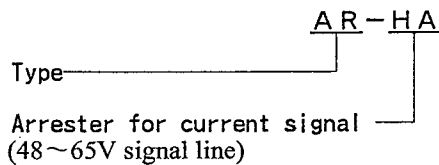


This high quality arrester protects electronic instruments by absorbing induced lightning surge voltage. Arrester should be set between lines through which surges are entered and serves to protect instruments such as transmitters or receivers safely from thunder inducement.

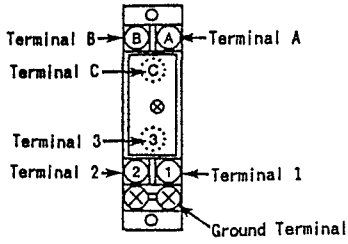
Cautionary Notes for Safe Use of the Product

The arrester may deteriorate or break if it receives surges. Arresters that have deteriorated below a specific level or are broken, may fail to meet their protection performance level and must therefore be replaced. When replacing such arresters, replace both the main unit and the terminal block. It should be noted that the arrester may fail to safeguard the equipment under protection if it receives any surges exceeding its tolerance limit, such as direct lightning strokes.

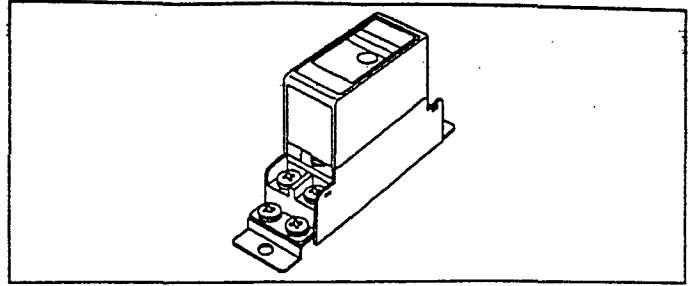


Input & Output	
Input signal	0~100mA DC (48~65V signal line)
Output signal	0~100mA DC
Standard Performance	
Permissible current leakage :	
Between lines	Less than 5 μ A (at 70V DC)
Between ground	Less than 10 μ A (at 90V DC)
Instrument side voltage limit :	
Between lines	Less than 90V (at 10kV, 1.2/50 μ s)
Between ground	Less than 380V (at 10kV, 1.2/50 μ s)
Surge discharge withstand capacity :	
	1000A (at 8/20 μ s)
Discharge starting voltage :	
Between lines	More than 75VDC
Between ground	More than 135VDC
Max. load current	100mA
Series resistance	33 Ω
Temperature range	-10~+60 $^{\circ}$ C
Humidity range	5~90%RH (no condensation)
Mounting & Shape	
Construction : 2 sections construction of main body and terminal base; plug-in+screw fastening	
Material	Case body : Black, unflammmable ABS plastic Terminal base : Black, unflammmable ABS plastic
Grounding	JIS Class D grounding [less than 100 Ω] (with grounding bar)
Mounting method : Wall mounting with M4 screw	
Connecting method : M4 screw terminal connection (fastening torque less than 1.2N·m)	
External dimension	100x23.5x55 mm (HxWxD)
Mounting dimension	90mm
Multi-mounting pitch	24mm
Weight	Abt. 110g

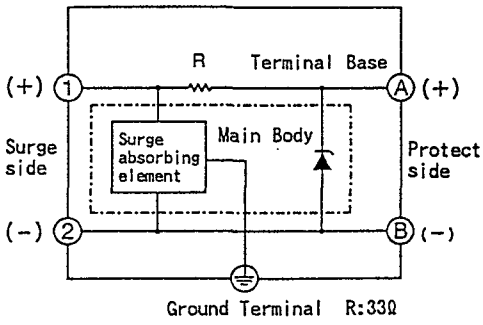
TERMINAL ARRANGEMENT



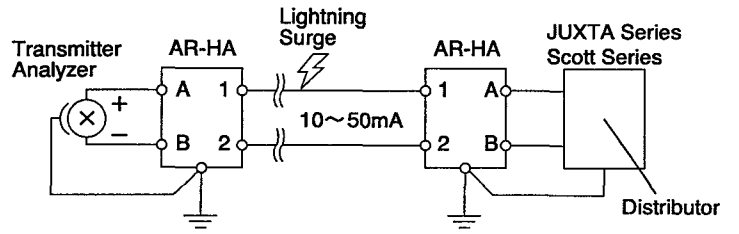
Terminal	Type	AR-HA
Protect side Terminal A	A	+
Protect side Terminal B	B	-
Protect side Terminal C	C	No function
Surge side Terminal 1	1	+
Surge side Terminal 2	2	-
Surge side Terminal 3	3	No function



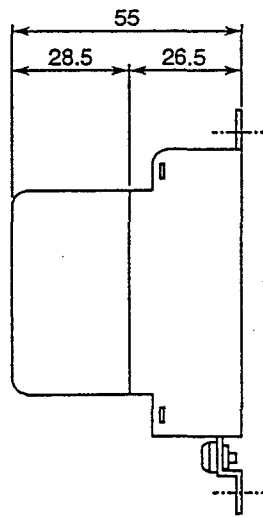
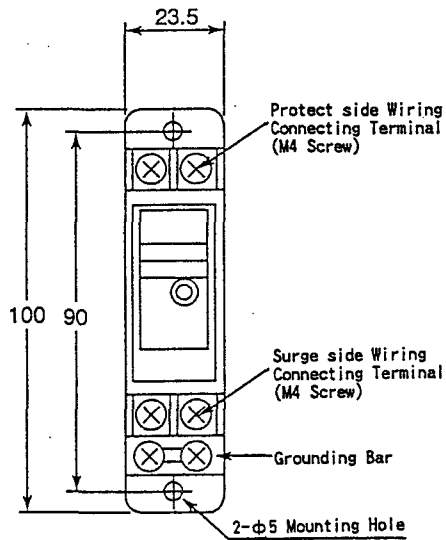
BLOCK DIAGRAM



WIRING



EXTERNAL DIMENSION



Unit : mm

Subject to change without notice for grade up quality and performance