

General Specifications

AR-SY
Arrester
for Selsyn
(90V AC)

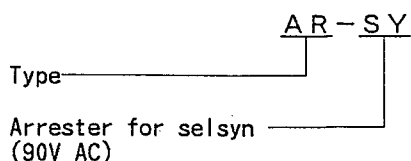
Scott

This high quality arrester protects electronic instruments by absorbing induced lightning surge voltage. Arrester should be set between lines through which surge enters and serves to protect instruments such as transmitters or receivers safely from thunder inducement.

Cautionary Notes for Safe Use of the Product

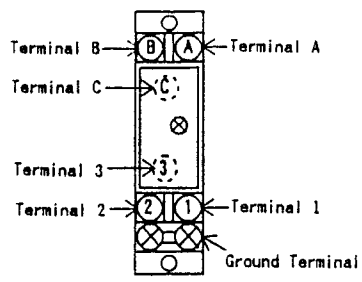
The arrester may deteriorate or break if it receives surges. Arresters that have deteriorated below a specific level or are broken, may fail to meet their protection performance level and must therefore be replaced. When replacing such arresters, replace both the main unit and the terminal block. It should be noted that the arrester may fail to safeguard the equipment under protection if it receives any surges exceeding its tolerance limit, such as direct lightning strokes.

TYPE

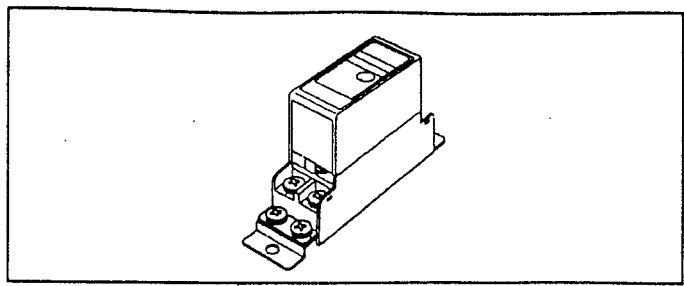


Input & Output		
Input signal	90V AC	
Output signal	90V AC	
Standard Performance		
Permissible current leakage :		
Between lines	Less than 1mA (at 200V DC)	
Between ground	Less than 1mA (at 400V DC)	
Instrument side voltage limit :		
Between lines	Less than 500V (10kV, 1.2/50 μ s)	
Between ground	Less than 1000V (10kV, 1.2/50 μ s)	
Surge discharge withstand capacity : 1000A (8/20 μ s)		
Discharge starting voltage :		
Between lines	More than 240V DC	
Between ground	More than 420V DC	
Maximum load current	100mA	
Temperature range	-10~+60 $^{\circ}$ C	
Humidity range	Less than 5~90% RH (no condensation)	
Mounting & Shape		
Construction : 2 sections construction of main body and terminal base with plug-in + screw fastening		
Material	Case body	Black, flame-resistance ABS plastic
	Terminal base	Black, flame-resistance ABS plastic
Grounding	JIS Class D grounding [less than 100 Ω] (with grounding bar)	
Mounting method : Wall mounting with M4 screw		
Connecting method : M4 screw terminal connection (fastening torque less than 1.2N·m)		
External dimension	100×23.5×55 mm (H×W×D)	
Mounting dimension	90mm	
Multi-mounting pitch	24mm	
Weight	Abt. 110g	

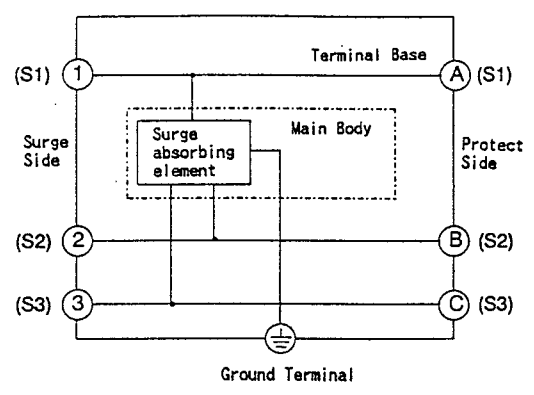
TERMINAL ARRANGEMENT



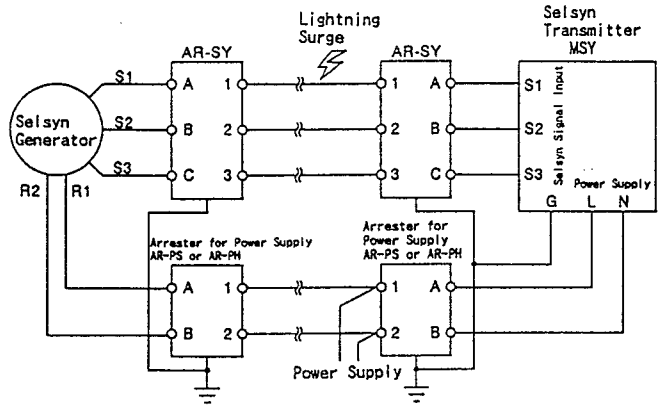
Terminal	Type	AR-SY
Protect side Terminal	A	S1
	B	S2
	C	S3
Surge side Terminal	1	S1
	2	S2
	3	S3



BLOCK DIAGRAM

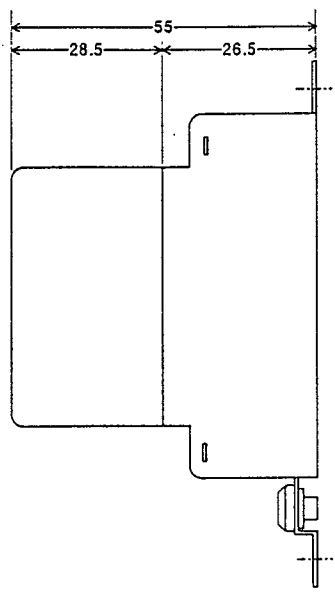
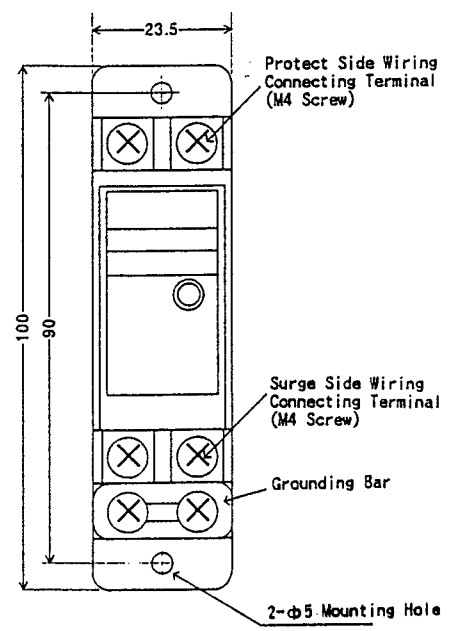


WIRING



EXTERNAL DIMENSION

Unit : mm



Subject to change without notice for grade up quality and performance