



# PRM<sup>®</sup>

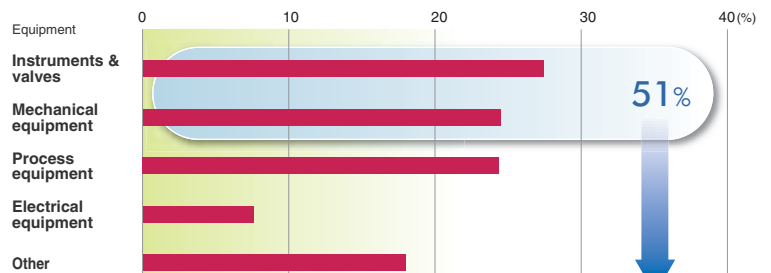
Plant Resource Manager

Centralized Asset Management and  
Intelligent Diagnostics

## Challenges

### Are you concerned about the health of rotating equipment in your plant?

Both machinery and field devices are essential to plant operations.



Profile of maintenance spending Source: Intech 2005 Nov.

To  
Minimize

## Solutions

### Get it on a single monitor

PRM monitors equipment health and process interface conditions online to reduce maintenance spending. PRM also minimizes the need for corrective and preventive maintenance to achieve Operational Excellence.



Bulletin 33Y05Q10-33E

www.yokogawa.com

**vigilantplant.**<sup>®</sup>  
The clear path to operational excellence

**YOKOGAWA** ◆

Performance

Predictability

Availability

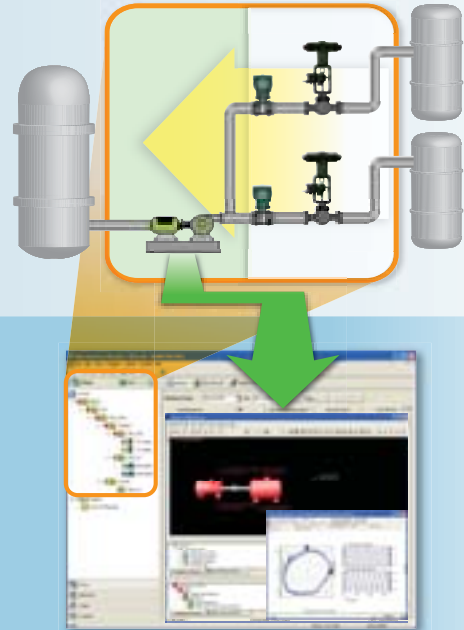
Reliability

Asset Excellence



## with **PRM**<sup>®</sup> Best in class collaboration

GE's System 1 is a condition monitoring and diagnostic software platform that provides both preventative and protection benefits for your critical assets. Through its integration with System 1, PRM is able to provide a consolidated supervisory window for critical machinery assets in addition to field instrumentation such as pressure transmitters and flowmeters.



### Benefits

- Optimized maintenance strategies, effectiveness, and activity
- Reduced risk to operations with respect to capability, safety, and business performance
- Controlled costs through more effective planning and avoiding unexpected shutdowns/catastrophic failures
- Cost savings by reducing manual data collection requirements
- Reduced damage to equipment from operation outside design parameters

## vigilantplant.<sup>®</sup>

The clear path to operational excellence

**SEE**  
CLEARLY

**KNOW**  
IN ADVANCE

**ACT**  
WITH AGILITY

VigilantPlant is Yokogawa's automation concept for safe, reliable, and profitable plant operations. VigilantPlant aims to enable an ongoing state of Operational Excellence where plant personnel are watchful and attentive, well-informed, and ready to take actions that optimize plant and business performance.

#### YOKOGAWA ELECTRIC CORPORATION

##### World Headquarters

9-32, Nakacho 2-chome, Musashino-shi, Tokyo 180-8750, Japan  
<http://www.yokogawa.com/>

#### YOKOGAWA CORPORATION OF AMERICA

2 Dart Road, Newnan, Georgia 30265, USA  
<http://www.yokogawa.com/us/>

#### YOKOGAWA EUROPE B.V.

Euroweg 2, 3825 HD Amersfoort, The Netherlands  
<http://www.yokogawa.com/eu/>

#### YOKOGAWA ENGINEERING ASIA PTE. LTD.

5 Bedok South Road, Singapore 469270, Singapore  
<http://www.yokogawa.com/sg/>

#### YOKOGAWA CHINA CO., LTD.

3F TowerD Cartelo Crocodile Building  
No.568 West Tianshan Road, Shanghai 200335, China  
<http://www.yokogawa.com/cn/>

#### YOKOGAWA MIDDLE EAST B.S.C.(c)

P.O.Box 10070, Manama  
Building 577, Road 2516, Busaiteen 225, Muharraq, Bahrain  
<http://www.yokogawa.com/bh/>

#### Trademarks

All brand or product names of Yokogawa Electric Corporation in this bulletin are trademarks or registered trademarks of Yokogawa Electric Corporation. System 1 is a trademark of General Electric Company. All other company brand or product names in this bulletin are trademarks or registered trademarks of their respective holders.

Represented by: