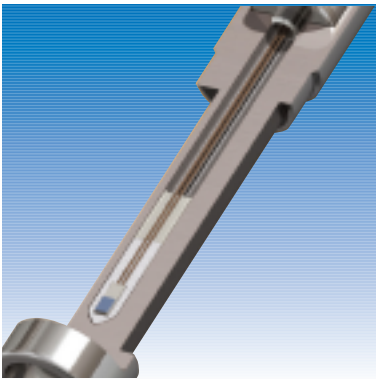


digital YEWFLO

Vortex Flowmeters



digital YEWFLO

Based on the field-proven sensor technology of the YEWFLO series of vortex flowmeters, digitalYEWFLO offers a unique signal processing technique that extends the features of standard Digital Signal Processing (DSP). The advanced processing algorithms are known as Spectral Signal Processing (SSP). SSP analyzes the vortex waveform into its spectral components to filter noise from signal for the most stable measurement possible. The new digitalYEWFLO will provide stable, accurate measurements at low flows even in noisy environments without any need for start-up tuning. The user benefits through greater reliability, reduced maintenance, and a lower total cost of ownership.

DigitalYEWFLO is available in integral or remote configurations, with flanged or wafer connections in line sizes from 0.5 to 16.0 inches, and can be applied in liquid, gas, and steam applications.

More than just Digital Signal Processing...

Yokogawa's YEWFLO vortex flowmeter has employed a dual piezoelectric crystal sensor in a passive noise cancellation circuit for over 20 years. Now, with DSP technology and Yokogawa's SSP algorithms, the information from this rugged dual sensor can further simplify startup and improve measurement performance by employing Adaptive

Noise Suppression (ANS). With the information available from a second sensor, the ANS algorithm maximizes the signal-to-noise ratio. The ANS computation is executed continuously to dramatically and dynamically reduce the noise component of the flow signal. Continuously adapting to changing noise conditions eliminates the need for start up adjustment or readjustment.

No start-up tuning

Automatically selects the optimum settings – even in noisy environments

Low flow stability

Accurately senses vortices at low flow rates for stable, accurate flow measurements

Backward compatible

The SSP amplifier can be retrofitted to provide the best vortex flow measurement available today

Advanced self-diagnostics

Provides diagnostic messages on high vibration environments, excessive flow fluctuations, and clogging or plugging in the area around the shedder bar. Analysis of the process allows true condition-based maintenance

Simplified parameter settings

Frequently used parameters grouped together in a quick-access format decreases commissioning time

Clear, parallel two-line LCD display

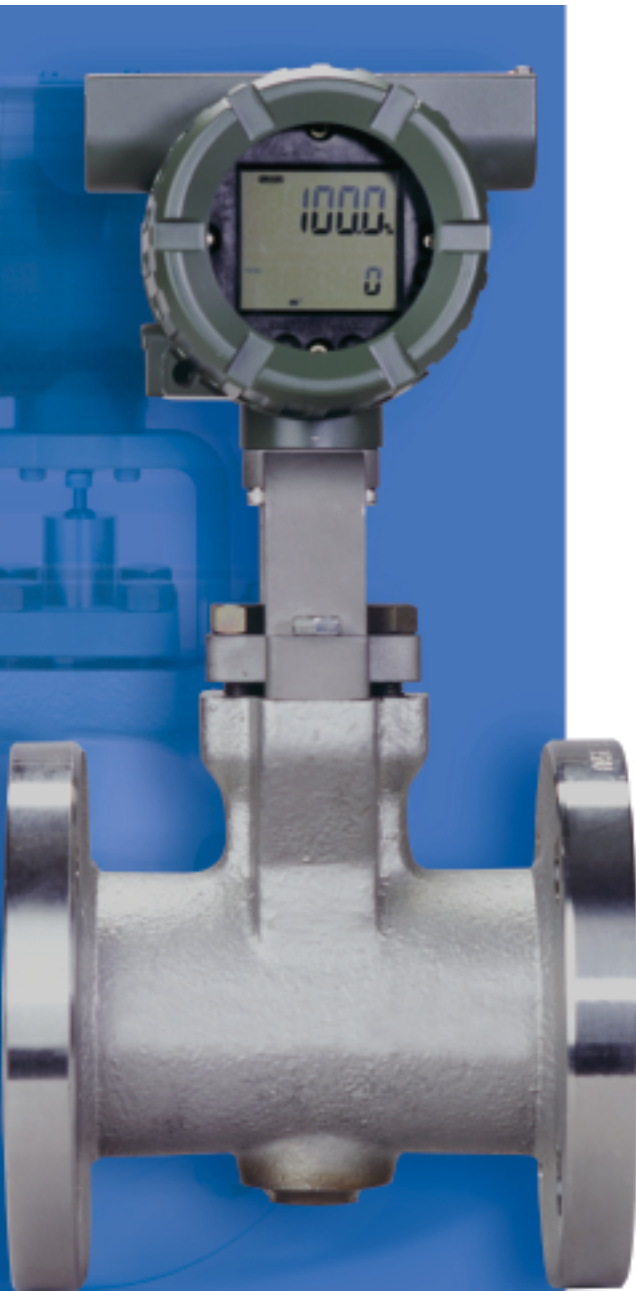
Displays simultaneous flow rate and total along with process diagnosis

New compact amplifier housing

Lighter, small and easier-to-handle design with increased reliability and performance

Simultaneous analog and pulse outputs

4-20mA signal for recording and control of flow and a pulse signal for totalizing and batching

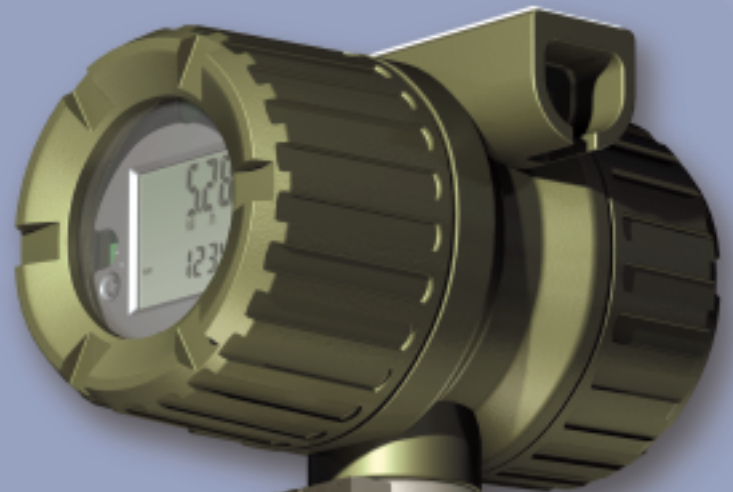
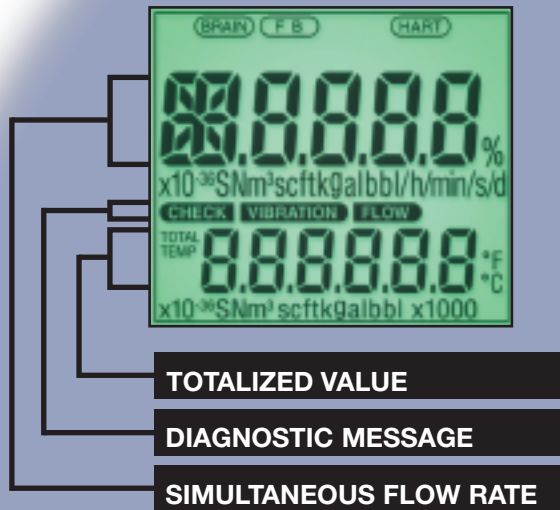


digital YEWFLO Multi-Variable Mass Vortex Flowmeter

With the multivariable option, an integral temperature sensor extends the application of digitalYEWFLO to include mass flow of saturated steam based on steam tables embedded in the software and the mass flow of liquids based on programmed fluid temperature coefficients. The measured temperature can be displayed on the two-line LCD indicator and is also available as an analog output for process temperature management.

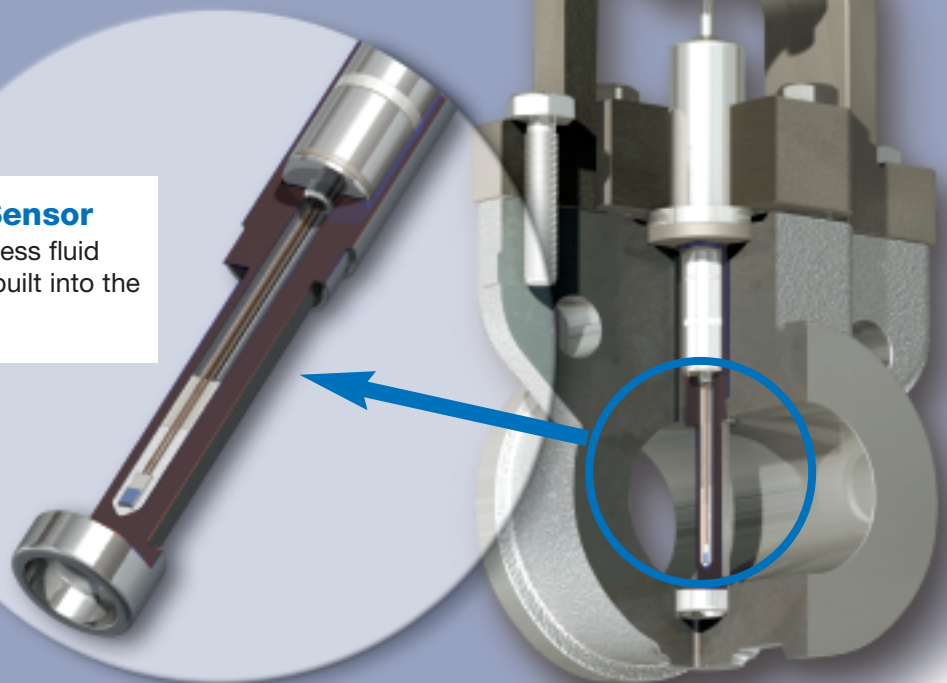
With improved resistance to vibration, enhanced output stability at low flow rates, and built-in temperature measurement, digitalYEWFLO with the multivariable option will provide close tracking of sudden and large fluctuations in flow and temperature to maintain precise measurement at all times.

- Provides simultaneous outputs for temperature monitoring and mass flow measurement
- Eliminates the need for separate components and associated installation costs
- Computes mass flow rate in real time based on the measured temperature
- Displays mass flow rate and temperature on two-line LCD indicator



Built-In Temperature Sensor

A Pt1000 RTD sensor for process fluid temperature measurement is built into the rugged shedder bar.



digital YEWFLO family



Hi-Purity

Hi-Purity digitalYEWFLO meets the standards set forth in ASTM G93-6 Level B and ANSI B40.1 Level IV. Electropolished to a 15Ra or better finish and double bagged, the Hi-Purity digitalYEWFLO accurately measures critical high purity steam, water, and gas applications.

Dual Sensor Design

When your application requires the highest safeguards for personnel and process, the digitalYEWFLO dual sensor design offers total redundancy and is available in a broad range of sizes and pressure ratings.



Hi-Pressure

Hi-Pressure digitalYEWFLO is designed to take your toughest high-pressure steam and water applications. The Hi-Pressure digitalYEWFLO is available with ANSI 900, 1500, and 2500# flange connections. Quality, dependability, and now pressure ratings to 5000 PSI!

Built-In Reducer Design

Eliminates the need for costly sections of reducing runs commonly required when applying vortex flowmeters. Up to two pipe size reductions can be accommodated in one meter. Ideal for new plant start-ups where the flow rates are normally low because piping is sized for planned future production.



	Standard Model	Multivariable Option
Service	Liquid, gas, steam	Liquid, saturated steam
Nominal Sizes	1/2"-16" (15-400mm)	1"-8" (25-200mm)
Process Connections	Flanged or wafer style ANSI class 150-1500#	Flanged or wafer style ANSI class 150-1500#
Process Pressure	-14.2 psig to flange rating	-14.2 psig to flange rating
Process Temperature	Standard: -40 to 500 deg. F (-40 to 260 deg. C) High temperature version: -40 to 842 deg. F (-40 to 450 deg. C)	-40 to 500 deg. F (-40 to 260 deg. C)
Ambient Temperature	-40 to 185 deg. F (-40 to 85 deg. C)	-40 to 185 deg. F (-40 to 85 deg. C)
Materials of Construction	Body: CF8M stainless steel (316SS) Shedder bar: Duplex stainless (equivalent to 329SS) Converter housing: Aluminum alloy	Body: CF8M stainless steel (316SS) Shedder bar: Duplex stainless (equivalent to 329SS) Converter housing: Aluminum alloy
Compensation Temperature	---	Liquid: -20 to 500 deg. F (-29 to 260 deg. C) Saturated steam: 212 to 500 deg. F (100 to 260 deg. C)
Accuracy	Liquid: +/-0.75% of reading Gas and steam: +/-1% of reading	Mass flow: +/-2% of reading Fluid Temperature: +/-0.5 deg.C
Repeatability	+/-0.2% of reading	+/-0.2% of reading
Output Signal	Simultaneous output (analog and transistor contact output) Analog: 4-20 mA, 2 wire Transistor contact: 3 wire open collector	Same as standard model. Analog output can be assigned to flow rate or temperature.
Communication Signal	BRAIN and HART protocols; Foundation Fieldbus	BRAIN and HART protocols; Foundation Fieldbus
Hazardous Area Classification	FM and CSA explosion proof & intrinsically safe	FM and CSA explosion proof & intrinsically safe

YOKOGAWA ◆

YOKOGAWA CORPORATION OF AMERICA
2 Dart Road, Newnan, Georgia 30265 USA
Tel: 800-258-2552
Fax: 770-254-0928

Represented by