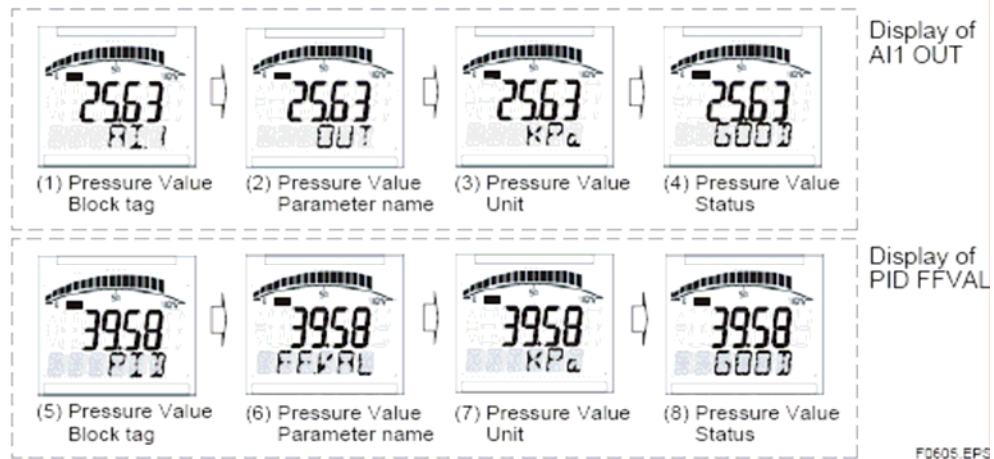




**Section 2.0** Example Displays

Example display of AI1 OUT and PID FF\_VAL, respectively:

(See *Figure 2*)



**Figure 2**

Example display during mechanical failure alarm:

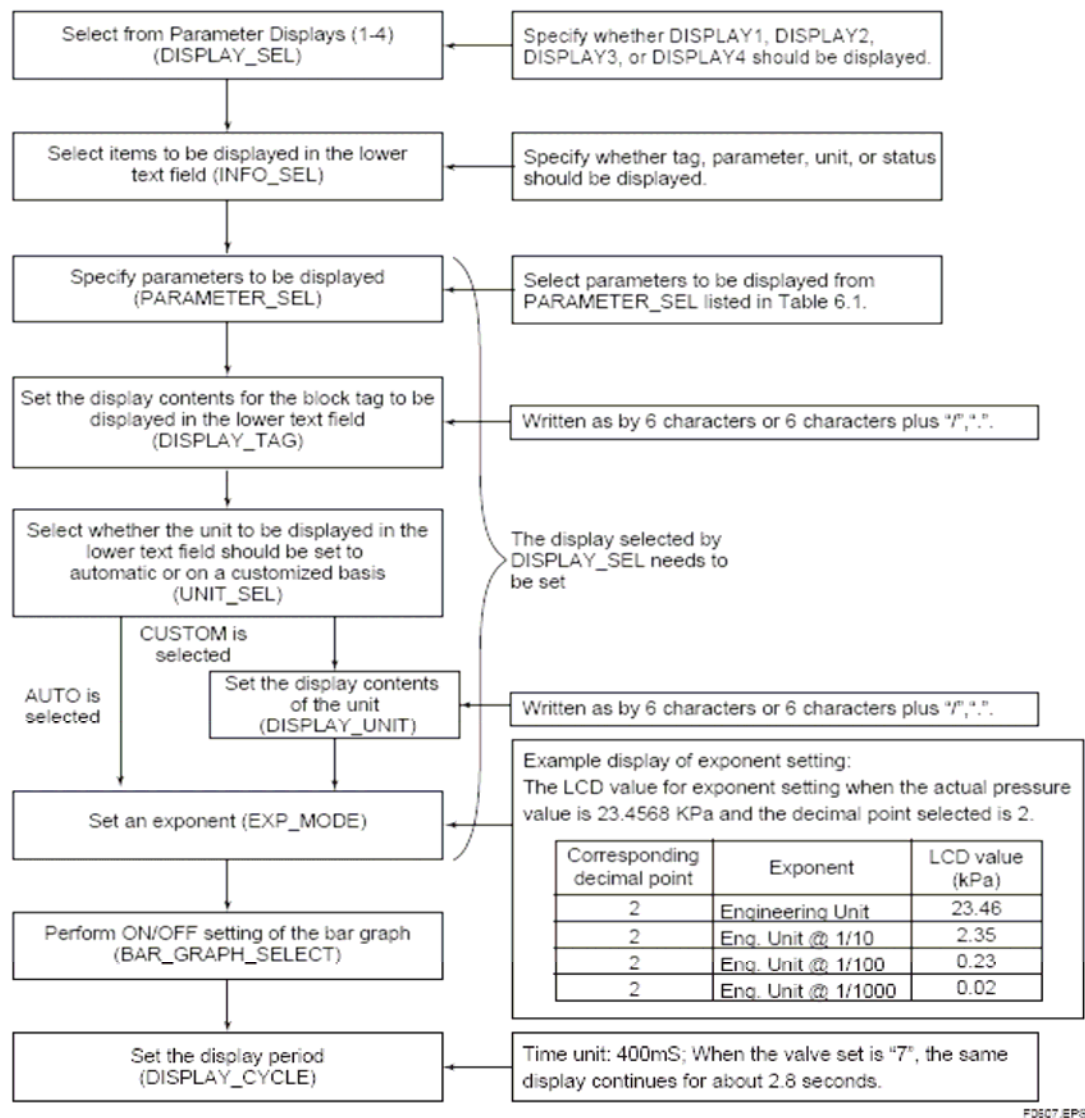
(See *Figure 3*)



**Figure 3**

**Section 3.0** Set-up

(See *Figure 4*)



*Figure 4*

## Section 4.0 Engineering Units

### Section 4.1 Units that can be displayed by the Automatic Line Function

(See *Chart 2*)

Index	Unit	Display on the LCD
1000	K	K
1001	°C	deg C
1002	°F	deg F
1130	Pa	Pa
1131	GPa	GPa
1132	MPa	MPa
1133	kPa	kPa
1134	mPa	mPa
1135	μPa	uPa
1136	hPa	hPa
1137	bar	bar
1138	mbar	mbar
1139	torr	torr
1140	atm	atm
1141	psi	psi
1142	psia	psia
1143	psig	psig
1144	g/cm <sup>2</sup>	g/cm2
1145	kg/cm <sup>2</sup>	kg/cm2
1146	inH <sub>2</sub> O	inH2O
1147	inH <sub>2</sub> O(4°C)	inH2O
1148	inH <sub>2</sub> O(68°F)	inH2O
1149	mmH <sub>2</sub> O	mmH2O
1150	mmH <sub>2</sub> O(4°C)	mmH2O
1151	mmH <sub>2</sub> O(68°F)	mmH2O
1152	ftH <sub>2</sub> O	ftH2O
1153	ftH <sub>2</sub> O(4°C)	ftH2O
1154	ftH <sub>2</sub> O(68°F)	ftH2O
1155	inHg	inHg
1156	inHg(0°C)	inHg
1157	mmHg	mmHg
1158	mmHg(0°C)	mmHg
1541	Paa	Paa
1542	Pag	Pag
1543	GPaa	GPaa
1544	GPag	GPag
1545	MPaa	MPaa
1546	MPag	MPag
1547	kPaa	kPaa
1548	kPag	kPag
1549	mPaa	mPaa
1550	mPag	mPag
1551	μPaa	uPaa
1552	μPag	uPag
1553	hPaa	hPaa
1554	hPag	hPag
1555	g/cm <sup>2</sup> a	g/cm2a
1556	g/cm <sup>2</sup> g	g/cm2g
1557	kg/cm <sup>2</sup> a	kg/cm2a
1558	kg/cm <sup>2</sup> g	kg/cm2g

T0604-1.EPS

Index	Unit	Display on the LCD
1559	inH <sub>2</sub> Oa	inH2Oa
1560	inH <sub>2</sub> Og	inH2Og
1561	inH <sub>2</sub> Oa(4°C)	inH2Oa
1562	inH <sub>2</sub> Og(4°C)	inH2Og
1563	inH <sub>2</sub> Oa(68°F)	inH2Oa
1564	inH <sub>2</sub> Og(68°F)	inH2Og
1565	mmH <sub>2</sub> Oa	mmH2Oa
1566	mmH <sub>2</sub> Og	mmH2Og
1567	mmH <sub>2</sub> Oa(4°C)	mmH2Oa
1568	mmH <sub>2</sub> Og(4°C)	mmH2Og
1569	mmH <sub>2</sub> Oa(68°F)	mmH2Oa
1570	mmH <sub>2</sub> Og(68°F)	mmH2Og
1571	ftH <sub>2</sub> Oa	ftH2Oa
1572	ftH <sub>2</sub> Og	ftH2Og
1573	ftH <sub>2</sub> Oa(4°C)	ftH2Oa
1574	ftH <sub>2</sub> Og(4°C)	ftH2Og
1575	ftH <sub>2</sub> Oa(68°F)	ftH2Oa
1576	ftH <sub>2</sub> Og(68°F)	ftH2Og
1577	inHga	inHga
1578	inHgg	inHgg
1579	inHga(0°C)	inHga
1580	inHgg(0°C)	inHgg
1581	mmHga	mmHga
1582	mmHgg	mmHgg
1583	mmHga(0°C)	mmHga
1584	mmHgg(0°C)	mmHgg
1590	barg	Barg
1591	mbarg	mBarg
1597	bara	Bara

T0604-2.EPS

*Chart 2*

### Section 4.2 Alternate Units

Alternately, the indicator can be programmed with any unit the customer needs (Not just the preprogrammed units). The unit can be up to eight alphanumeric characters, but only the first six characters will be displayed.

(Refer to Set-up Procedure is [Section 3.0](#))