

Technical Note

EJA / EJX Series Process Connection Kits

Yokogawa offers two process connector kits. These kits use the same parts as used on the standard manufactured units.

Kit #1

Part Number: M1244BU-A

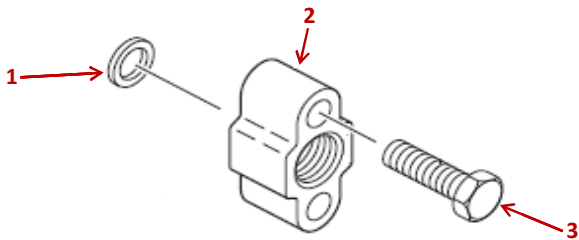
This kit has a 1/2 inch 316 SST process connector. The kit includes the connector, two bolts, and one white teflon gasket.

Kit #2

Part Number: M1244CV-A

This kit has a 1/4 inch 316 SST process connector. The kit includes the connector, two bolts, and one white teflon gasket.

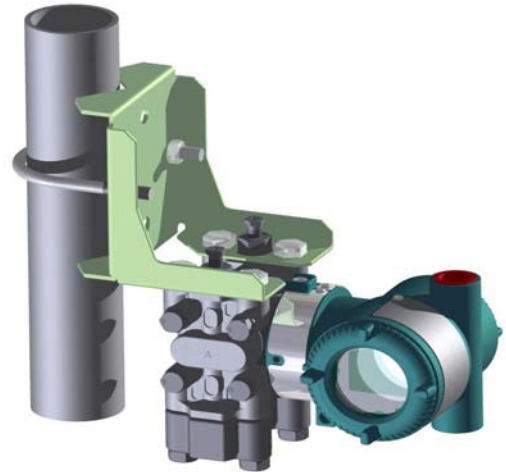
Both Kits include:



PDS1012.a

Item	Qty.	Description
1	1	Process Connector Gasket (PTFE Teflon)
2	1	316 SST Process Connector
3	2	316 SST Process Connector Bolt

PDS1012.b



PDS1012.c

EJA110A Transmitter with two (2) process Connector Kits

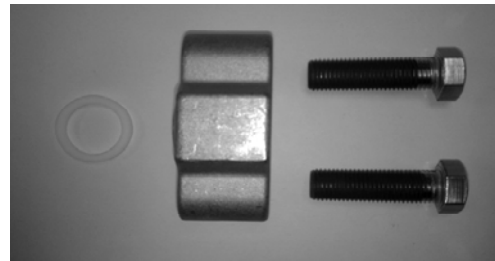
Applicable Models

EJX110A*, EJX120A*, EJX210A**, EJX310A, EJX430A

EJA110A*, EJA120A*, EJA210A**, EJA220A**, EJA310A, EJA430A

* Requires two (2) kits

** Low-pressure side



PDS1012.d

Process Connector Kit