

General Specifications

NT320AJ
Extended Security Package



GS 34P02H07-01E

■ GENERAL

Extended Security Package is an optional package that is designed to strengthen the security functions of VDS (Versatile Data Server Software) and ASTMAC (*1). This package adds the following security functions:

Work File Protection function:

Protects files created during operation.

RunAs Dialog Box Password Management function:

Notifies the user to change its password, when its password will be expired or has been expired; and enables the user to change its password; via the RunAs dialog box.

HMI Server Password Management function:

Notifies the user to change its password, when its password will be expired or has been expired; and enables the user to change its password; on HMI client.

*1: ASTMAC is Japanese domestic market only (Not sales for overseas).

For details on the standard security functions provided with VDS/ASTMAC, refer to the General Specifications VDS (GS 34P02A02-01E) and ASTMAC Overview (GS 34P02A03-01E) or the Technical Information outlining each function.

■ SYSTEM REQUIREMENTS

The system requirements are as described in the General Specifications VDS (GS 34P02A02-01E) and ASTMAC Overview (GS 34P02A03-01E). For information regarding the possibility of installing this package on computers running ASTMAC basic models, refer to the general specifications ASTMAC Overview (GS 34P02A03-01E).

■ FUNCTIONAL SPECIFICATIONS

● Work File Protection Function

This function allows file protection against changes of the following files created when working on a computer running VDS/ASTMAC.

File Protection

File type		Read	Write	List	Delete	Move	Copy	Create
Standard	Security log files	X	X	✓	X	X	X	X
	Message text files	✓	✓	✓	✓	✓	✓	✓
	Long-term archive files	✓	✓	✓	✓	✓	✓	✓
	Logging report files	✓	✓	✓	✓	✓	✓	✓
Extended	Message text files	When not using the folder Protected	✓	X	✓	✓	✓	✓
	Long-term archive files		✓	X	✓	✓	✓	✓
	Logging report files		✓	X	✓	✓	✓	✓
	Message text files	When using the folder Protected (*1)	✓	X	✓	X	X	X
	Long-term archive files		✓	X	✓	X	X	X
	Logging report files		✓	X	✓	X	X	X

T01E.EPS

✓: Permitted
X: Prohibited

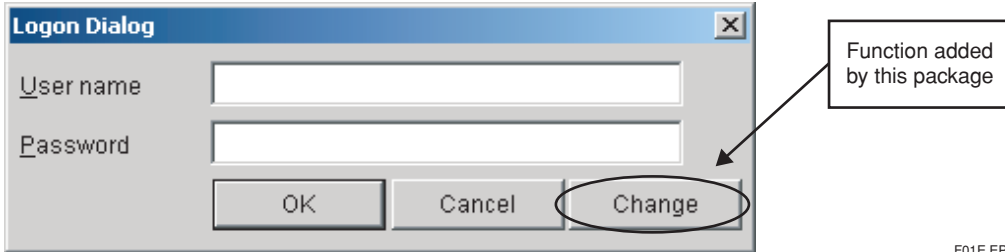
*1: The folder Protected, located in the Data folder of the VDS/ASTMAC installation folder, has strengthened security. Specifying that files be created under the folder Protected allows you to prohibit them from being deleted and moved, as well other tasks being performed on them.

Note: If a user account for working on a computer running VDS/ASTMAC belongs to an ASTMAC Manager group, the user is assigned full control of file access privileges and can perform any task. An ASTMAC Manager group has special privileges. The range of tasks that can be performed by this group cannot be changed and tasks on all items to be operated are permitted.

● **RunAs Dialog Box Password Management Function**

RunAs dialog box is provided standard with VDS/ASTMAC. The RunAs dialog box allows a program to be newly started under the authorization of another user. Tasks performed to specific items to be operated on a data server from newly started application forms or VB programs are performed under the authorization of the user specified in the RunAs dialog box. Security Builder defines the authorization of each user.

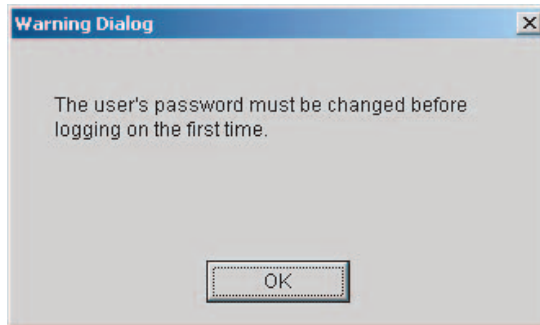
Use of this package allows passwords to be changed via the RunAs dialog box.



F01E.EPS

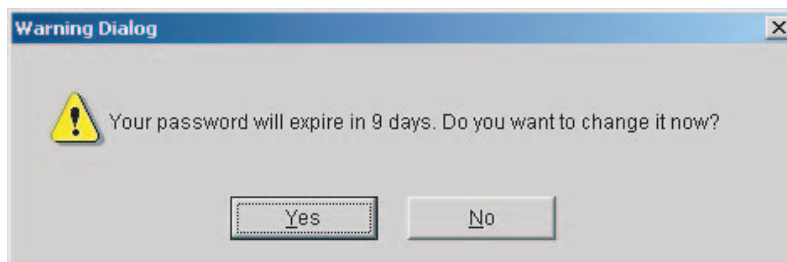
In addition, when a user attempts to log on via the RunAs dialog box, the user's password is confirmed and if one of the following cases is applicable, a dialog box prompting the user to change his or her password is displayed.

- When the password needs to be changed before logging on the first time
- When the password will expire soon
- When the password has expired already



F02E.EPS

When the password needs to be changed before logging on the first time



F03E.EPS

When the password will expire soon



F04E.EPS

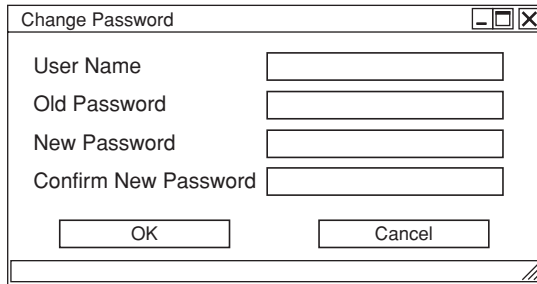
When the password has expired already

● **HMI Server Password Management Function**

If you use this package, you will be able to use the following password management function on VDS HMI client.

• **Changing Password**

You can change your password on the HMI client by calling “Change Password” window.

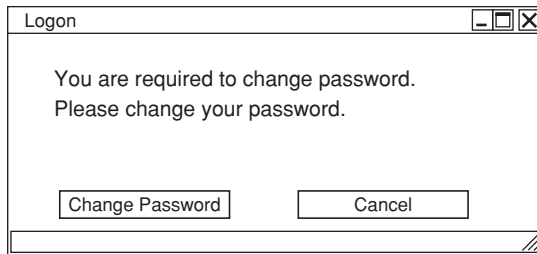


F05E.EPS

Figure “Change Password” Window

• **Requirement for Changing Password**

When you log on, “Requirement for Changing Password” window appears.

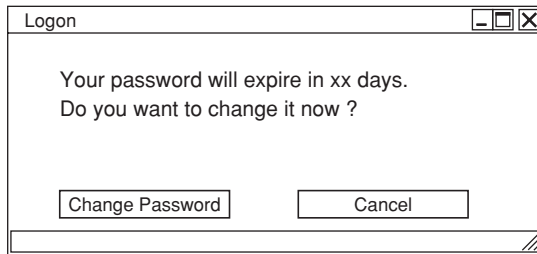


F06E.EPS

Figure “Requirement for Changing Password” Window

• **Notification when Password will Expire**

When you log on, “Notification when Password will Expire” window appears.

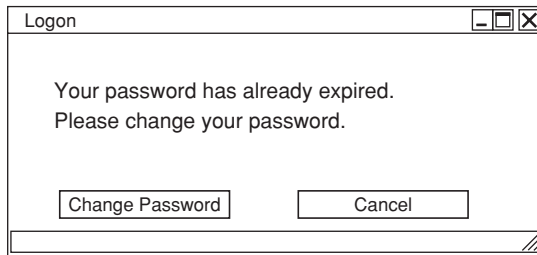


F07E.EPS

Figure “Notification when Password will Expire” Window

• **Notification that Password has Expired**

When and after you log on, “Notification that Password has Expired” window (or dialog box) appears. If it is detected that your password has been expired after you log on, you will be forced to log off as soon as you close this window.



F08E.EPS

Figure “Notification that Password has Expired” Window

■ MODEL AND SUFFIX CODE

Model	Suffix Code	Description
NT320J	-LW11A	Extended security package

T02E.EPS

■ ITEMS TO SPECIFY WHEN ORDERING

Model and suffix code

■ RELATED DOCUMENTATION

VDS: GS 34P02A02-01E
ASTMAC Overview: GS 34P02A03-01E

■ TRADEMARKS

- STARDOM is a trademark of Yokogawa Electric Corporation.
- ASTMAC is a registered trademark of Yokogawa Electric Corporation.
- Microsoft and Windows are registered trademarks of Microsoft Corporation in the United States and other countries.
- Other company and product names appearing in this document are trademarks or registered trademarks of their respective holders.