

General Specifications

eCUBE Optional Packages



GS 34P03A03-01E

■ GENERAL

Several optional packages are available for client PCs on eCUBE systems in a standalone system.

● eCUBE Report Package

This package acquires hour data files that are stored on eCUBE units, transfers them to a client PC, and creates, displays, and prints reports.

● eCUBE Event Data Viewer Package

This package acquires event data (data before and after an event occurred) that has been collected by eCUBE units in case of alarm detection and displays it on a client PC.

● eCUBE Alarm Package

This package displays alarm messages on a client PC that have been issued by eCUBE units.

● eCUBE File Converter Package

This package collects data files from eCUBE units, transfers them to the client PC and extracts the data in CSV format.

● eCUBE CSV Converter

eCUBE CSV converter is the function to convert the data collected by eCUBE unit into comma-separated value (CSV) text files.

CSV files can be transferred to a client PC through FTP.

● eCUBE Event Discrete Input Function

The eCUBE event discrete input function monitors the digital inputs at wide intervals to transmit alarm events only.

In addition to standard data inputs (analog, discrete and pulse inputs), it is possible to add 512 event discrete inputs.

■ OPERATING ENVIRONMENT

Item	Specification
Computer	PC/AT compatible
OS	Windows 2000 Professional SP4, Windows XP Professional SP1, SP2
Display	At least 1024 x 768 pixels
Communication	Ethernet
Number of eCUBE units that can be connected simultaneously	10 max. (*1)
FCN/FCJ System card	At least 128 MB (*3)
Others	Microsoft Excel 2000 SP3, Excel 2002 SP2, Excel 2003 (*2)

- *1: Each of the eCUBE optional packages can handle the number of eCUBE units that can be configured with an eCUBE system definition tool. T01E.EPS
- *2: Required when using the eCUBE Report Package.
- *3: To run eCUBE CSV Converter, a 512-MB FCN/FCJ System card is required.

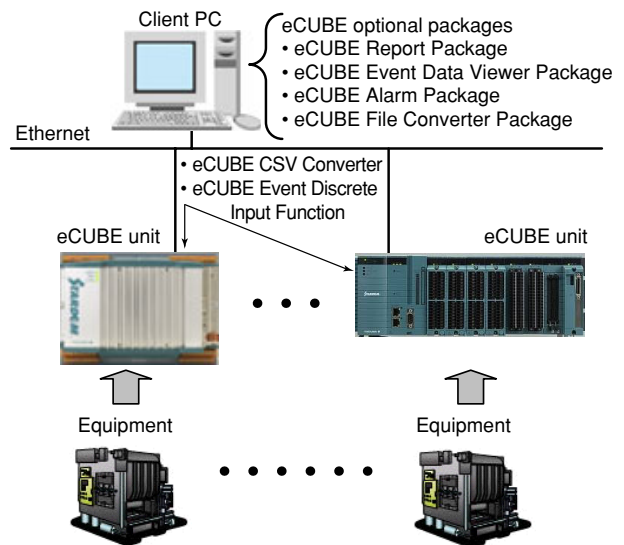


Figure Standalone eCUBE System

F01E.EPS

eCUBE REPORT PACKAGE

● Function Overview

The eCUBE Report Package runs on a client PC. Through FTP it acquires hour data files that have been collected by eCUBE units, and then creates, displays, and prints report files in Excel format.

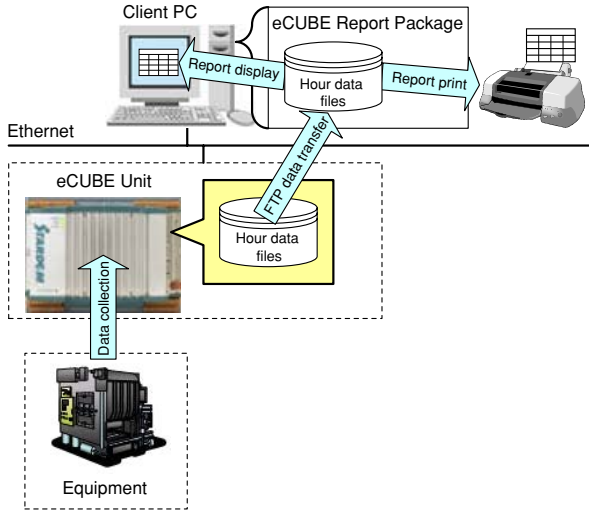


Figure eCUBE Report Package's Functions

F02E.EPS

Equipment Report 1

Individual equipment daily report month

Columns	Measurement Unit	FlowRate	Origin data	Location	Measurement Interval	Report Unit
1:00	100	100	100	100	100	100
2:00						
3:00						
4:00						
5:00						
6:00						
7:00						
8:00						
9:00						
10:00						
11:00						
12:00						
13:00						
14:00						
15:00						
16:00						
17:00						
18:00						
19:00						
20:00						
21:00						
22:00						
23:00						
24:00						
Month						

F03E.EPS

Figure Example of Equipment Daily Reports

● Report Data File Collection

This function collects hour data files from eCUBE units and creates reports.

Item	Description
Collection method	Automatic or manual
Closing time	Specified time using an eCUBE system definition tool
Time for creating reports automatically	Once a day (at a specified time performs the closing processing of data that was collected the previous day, and creates reports)

T02E.EPS

● Report

This function displays reports that have been created from collected report data files. The following table shows the types and numbers of reports that can be displayed.

Item	Number of sheets	Description
Equipment Daily Report	99 max. (per system)	Daily report for each piece of equipment
Equipment Monthly Report	99 max. (per system)	Monthly report for each piece of equipment
Equipment Total Daily Report	1 (per system)	Daily report which aggregates tag data for all the equipment
Equipment Total Monthly Report	1 (per system)	Monthly report which aggregates tag data for all the equipment
Sampling Data Report	99 max. (per system)	Measurement report for each tag data

T03E.EPS

● Report Print

This function prints collected report data files automatically.

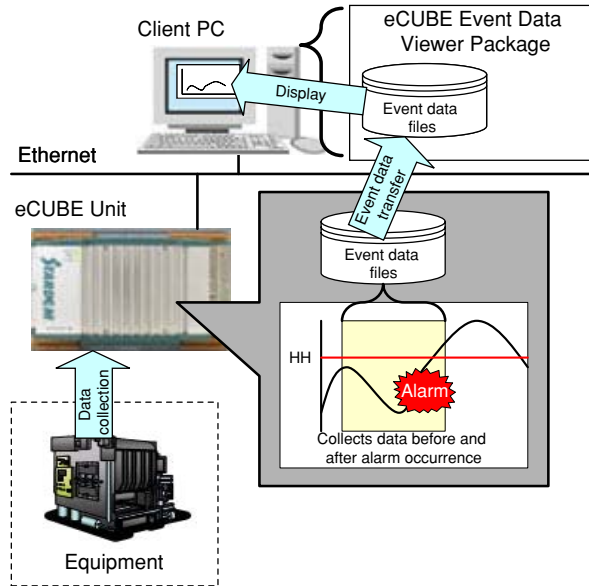
Item	Description
Destination printer	1 printer can be specified.
Automatic print time	Once a day

T04E.EPS

eCUBE EVENT DATA VIEWER PACKAGE

The eCUBE Event Data Viewer Package runs on a client PC. It acquires and displays event data (*1) that has been collected by eCUBE units, as well as outputs them in CSV format.

*1: Event data refers to data that are collected before and after the failure of equipment or an alarm has been detected by an eCUBE unit. This data helps analyze the cause of failures and alarms.



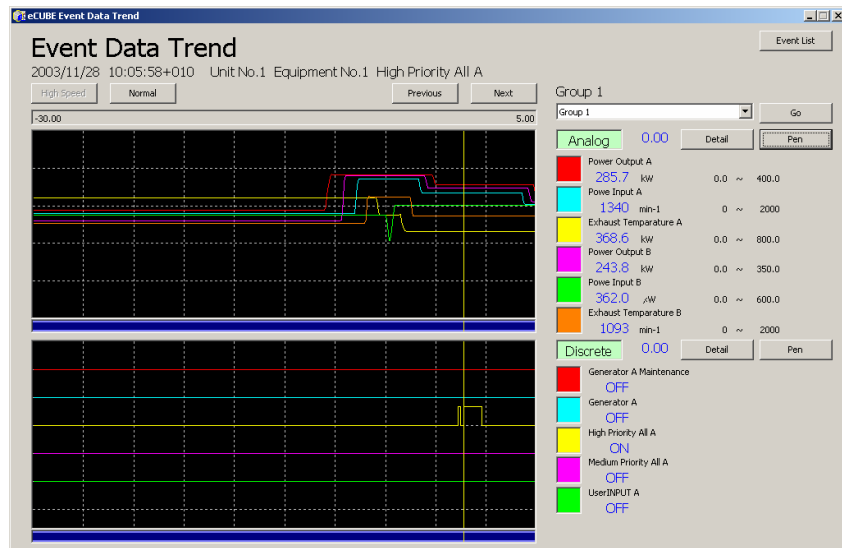
F04E.EPS

Figure eCUBE Event Data Viewer Package's Functions

● Screen Structure

The eCUBE Event Data Viewer Package is equipped with the following screens:

- Event list screen
- Event data trend screen
- Detailed trend screen
- Pen change screen
- Event data collection tool screen



F11E.EPS

Figure Example of Event Data Trend Screen

■ eCUBE ALARM PACKAGE

● Function Overview

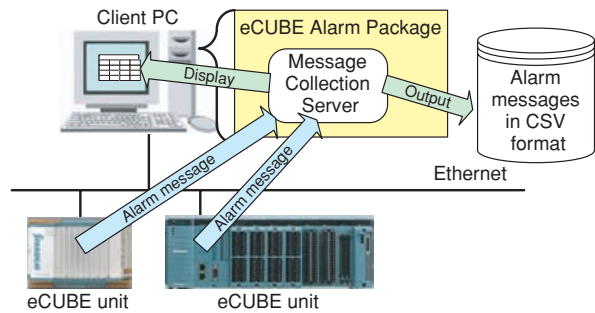
The eCUBE Alarm Package runs on a client PC and displays alarm messages on it that have been issued by eCUBE units.

● Alarm Message Collection

This function receives alarm messages on the client PC that have been sent from the eCUBE units.

Item	Description
Collection method	Automatic
Number of messages that can be displayed with the message display tool.	100 to 1,000

T05E.EPS



F06E.EPS

Figure eCUBE Alarm Package's Functions

● Popup Dialog Display

This function displays a popup dialog when an alarm message is received. It also outputs alarm tones based on the alarm level.

● Message List Display

This function displays a list of alarm messages collected by the message collection server.

It can also output messages in CSV format.

Table Display Fields List

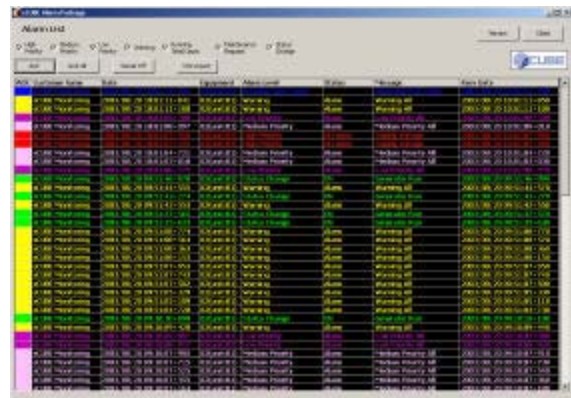
Field	Description
Confirmation	Confirmation status
Customer name	Customer name of eCUBE unit in which alarm occurred
Date and time	Time at which alarm occurred in the eCUBE unit
Equipment number	Number corresponding to equipment where alarm occurred
Alarm level	Alarm priority level
Status	Alarm status (e.g., HH alarm, LL alarm, and reset status)
Message	Alarm message
Reception time	Time at which alarm was received by client PC

T06E.EPS



F07E.EPS

Figure eCUBE Alarm Package Popup Dialog



F08E.EPS

Figure Message Display Tool

eCUBE FILE CONVERTER PACKAGE

● Function Overview

The eCUBE File Converter Package runs on a client PC and collects data files from eCUBE units and outputs the data in CSV format.

● Data File Collection

This function enables a client PC to collect data files collected by eCUBE units.

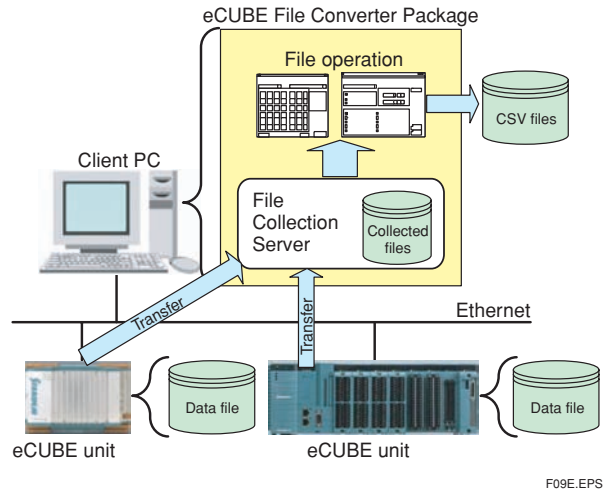
Item	Description
Collection method	Automatic and manual
eCUBE data files to collect	<ul style="list-style-type: none"> • Minute data files • Hour data files
Storage period	<ul style="list-style-type: none"> • Minute data: 40 days • Hour data: 400 days

T07E.EPS

● File Operation

File operation functions perform actions such as displaying collected status pertaining to the collection of data files from eCUBE units, and extracting data in CSV format from collected files.

- Registration/collection schedule setting function
This function registers eCUBE units for data file collection, and sets the collection schedule.
- Data file collected status display function
This function displays the collected status for data files collected from eCUBE units.
It is also possible to re-collect data files from eCUBE units.
- CSV file output function
This function outputs data in CSV file format covering a specified time period from files collected by the eCUBE File Converter Package.



F09E.EPS

Figure eCUBE File Converter Package's Functions



F10E.EPS

Figure Minute Data File Collected Status Display

eCUBE CSV Converter

● Function Overview

eCUBE CSV converter is the function to convert the data collected by eCUBE unit into comma-separated value (CSV) text files.

CSV files can be transferred to a client PC through FTP.

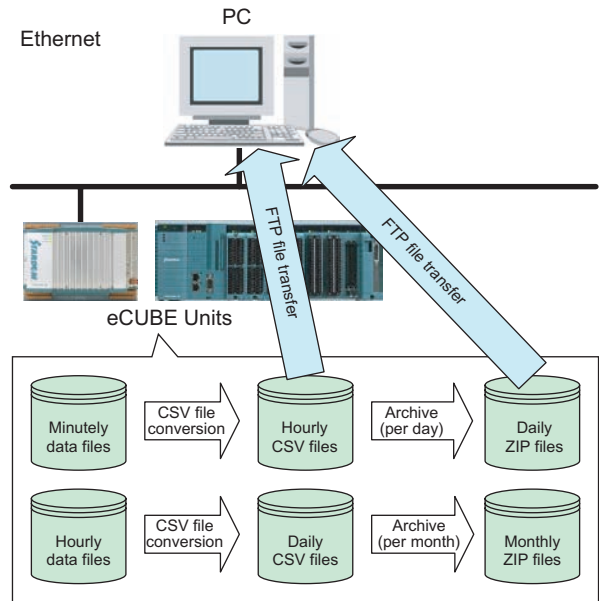
● Data Archives

The one-minute and one-hour interval data collected by an eCUBE unit are converted into CSV files and stored in the same eCUBE unit. The CSV files thus created are compressed into zip format archive files at specific time intervals.

Item	Description
eCUBE data files to be converted	<ul style="list-style-type: none"> Minutely data files Hourly data files
Correspondence of the collected data by eCUBE unit and CSV files	<ul style="list-style-type: none"> Minutely data: Data for each hour per file (*1) Hourly data: Data for each day per file (*2)
Number of CSV files to be archived into a archive file	<ul style="list-style-type: none"> Minutely data: CSV files for each day (*2) Hourly data: CSV files for each month (*3)
Storage period for CSV	<ul style="list-style-type: none"> Minute data: 100 days Hour data: 5 years

T16E.EPS

- *1: Conversion takes place every hour on the hour.
 - *2: Conversion takes place at 00:02 midnight.
 - *3: Archiving takes place at 00:03 midnight on the first day of every month.
- Note: To run eCUBE CSV Converter, a 512-MB FCN/FCJ System card is required.



F12E.EPS

Figure eCUBE CSV Converter

eCUBE CSV Converter versus eCUBE File Converter Package

The table below summarizes the differences between these two options.

Item	eCUBE CSV Converter	eCUBE File Converter Package
License for use on eCUBE unit	Needs an eCUBE CSV Converter unit license.	Needs an eCUBE File Converter Package unit license.
License for use on PC	Needs no license for PC.	Needs an eCUBE File Converter Package PC license.
File transfer to PC	File transfer is performed by the user using a general-purpose FTP utility program.	File transfer is performed by the package automatically or at the user's request.
Data storage period	<ul style="list-style-type: none"> Minutely data: 100 days Hourly data: 5 years 	<ul style="list-style-type: none"> Minutely data: 40 days Hourly data: 400 days
Format of stored/archived files	CSV files and zip archive files containing CSV files.	Program-specific internal file formats; can be converted into CSV files.
Others	—	<ul style="list-style-type: none"> Data file collection can be scheduled. The results of data file collection can be viewed.

T17E.EPS

■ eCUBE Event Discrete Input Function

● Function Overview

The eCUBE event discrete input function monitors the digital inputs at wide intervals to transmit alarm events only.

In addition to standard data inputs (analog, discrete and pulse inputs), it is possible to add 512 event discrete inputs.

Using this function in combination with the on-site monitoring package, it is also possible to show the instantaneous values of event discrete inputs in a VDS window.

Item	Description
Event discrete input	A discrete tag only responsible for event transmission (alarm notification)
Data collection interval	2 s to 20 s
Maximum number of inputs	512/unit

T20E.EPS

● Event Discrete Input Function

The event discrete input function makes event transmissions (alarm notification) according to the input data.

The input data is inverted as necessary and the results are transmitted as event data.

It is also possible to transmit recovery event data. (Alternatively, event data can be transmitted only when the Interlock option is set to ON.)

This function has no capability of saving data, showing instantaneous values on a browser screen and changing parameters, as compared with the standard discrete input monitoring function.

● Status Display Using VDS

It is possible to display the statuses of event discrete inputs in a VDS window using the eCUBE on-site monitoring package.

■ MODELS AND SUFFIX CODES

● eCUBE Report Package

		Description
Model	NT8850J	eCUBE Report Package PC license
Suffix Codes	-L	License
	B	Base license
	C	Multiple license for second or later packages
	1	Always 1
	1	Always 1
	A	Standard

T08E.EPS

Note: This license is required for each client PC on which the eCUBE Report Package runs.

Note: When this license is employed for two or more client PCs on a system, the multiple license code can be specified for the second or later packages.

Note: In addition to the PC license, the eCUBE Report Package unit license (NT8851J) is also required for eCUBE units.

		Description
Model	NT8851J	eCUBE Report Package unit license
Suffix Codes	-L	License
	W	Issued at Web
	1	Always 1
	1	Always 1
	A	Standard

T09E.EPS

Note: This license is required for each eCUBE unit that an eCUBE Report Package (NT88560) accesses.

● eCUBE Event Data Viewer Package

		Description
Model	NT8854J	eCUBE Event Data Viewer Package PC license
Suffix Codes	-L	License
	B	Base license
	C	Multiple license for second or later packages
	1	Always 1
	1	Always 1
	A	Standard

T10E.EPS

- Note: This license is required for each client PC on which the eCUBE Event Data Viewer Package runs.
- Note: When this license is employed for two or more client PCs on a system, the multiple license code can be specified for the second or later packages.
- Note: In addition to the PC license, the eCUBE Event Data Viewer Package unit license (NT8855J) is also required for eCUBE units.

		Description
Model	NT8855J	eCUBE Event Data Viewer Package unit license
Suffix Codes	-L	License
	W	Issued at Web
	1	Always 1
	1	Always 1
	A	Standard

T11E.EPS

- Note: This license is required for each eCUBE unit that an eCUBE Event Data Viewer Package (NT8854J) accesses.

● eCUBE Alarm Package

		Description
Model	NT8856J	eCUBE Alarm Package PC license
Suffix Codes	-L	License
	B	Base license
	C	Multiple license for second or later packages
	1	Always 1
	1	Always 1
	1	Always 1
	A	Standard

T12E.EPS

- Note: This license is required for each client PC on which the eCUBE Alarm Package runs.
- Note: In addition to the PC license, the eCUBE Alarm Package unit license (NT8857J) is also required for eCUBE units.

		Description
Model	NT8857J	eCUBE Alarm Package unit license
Suffix Codes	-L	License
	W	Issued at Web
	1	Always 1
	1	Always 1
	A	Standard

T13E.EPS

- Note: This license is required for each eCUBE unit that an eCUBE Alarm Package (NT8856J) accesses.

● eCUBE CSV Converter

		Description
Model	NT8861J	eCUBE CSV Converter unit license
Suffix Codes	-L	License
	W	Issued at Web
	1	Always 1
	1	Always 1
	A	Standard

T18E.EPS

- Note: This license is required for each eCUBE unit to run eCUBE CSV Converter.
- Note: To run eCUBE CSV Converter, a 256-MB FCN/FCJ System card is needed.
- Note: Use FCN/FCJ Basic Software, R1.50 or later.

● eCUBE Event Discrete Input Function

		Description
Model	NT8862J	eCUBE Event Discrete Input Function UNIT License
Suffix Codes	-L	License
	W	Issued at Web
	1	Always 1
	1	Always 1
	A	Standard

T21E.EPS

Note: This license is required for each eCUBE unit that an eCUBE Event Discrete Input Function (NT8862J) accesses.

Note: Use FCN/FCJ Basic Software, R1.80 or later.

● eCUBE File Converter Package

		Description
Model	NT8858J	eCUBE File Converter Package PC license
Suffix Codes	-L	License
	B	Base license
	C	Multiple license for second or later packages
	1	Always 1
	1	Always 1
	A	Standard

T14E.EPS

Note: This license is required for each client PC on which the eCUBE File Converter Package runs.

Note: When this license is employed for two or more client PCs on a system, the multiple license code can be specified for the second or later packages.

Note: In addition to the PC license, the eCUBE File Converter Package unit license (NT8859J) is also required for eCUBE units.

		Description
Model	NT8859J	eCUBE File Converter Package unit license
Suffix Codes	-L	License
	W	Issued at Web
	1	Always 1
	1	Always 1
	A	Standard

T15E.EPS

Note: This license is required for each eCUBE unit that an eCUBE File Converter Package (NT8858J) accesses.

■ ORDERING INSTRUCTIONS

Specify the model and suffix codes.

For information about the FCN/FCJ application portfolios' software media, see GS 34P02P20-01E "Application Portfolios for FCN/FCJ."

■ TRADEMARKS

- STARDOM is a trademark of Yokogawa Electric Corporation.
- Application Portfolio is a trademark for which the registration is currently under application.
- Other names of companies and products that appear in this document are registered trademarks or the trademarks of the respective holders.